



# UltraLine® 74R1, 74R2

## Electric Strikes for Rim Exit Devices with Pullman Type Latchbolts

**74R1 Electric Strike** is designed for rim exit devices with 3/4" [19.1 mm] Pullman latchbolts. For use in aluminum, hollow metal or wood applications.

**74R2 Electric Strike** is designed for narrow stile rim exit devices with 1/2" [12.7 mm] Pullman latchbolts. Designed for use in aluminum applications.

Open electrically under 25 lbs [11.3 kg] of preload. Preload is pressure exerted on doors by air conditioning systems, warping or misaligned hardware which can disable common electric strikes.

### Function

These non-handed strikes feature an ultra-compact design and adjustable stainless steel keepers with over 1,500 lbs [680.4 kg] of holding force in fail secure mode. The strikes release electrically with up to 25 lbs of door preload. Single solenoid operates on 12/16/24 VDC power. Provides electrical remote control, allowing door to open without actuation of the exit device.

### Certifications

UL 1034

ULC-S319

ANSI/BHMA A156.31

UL 294

ANSI/BHMA A156.18

Electric Strikes and  
Frame Mounted  
Actuators, Grade 1

### Features

#### Case

**74R1:** 1-13/32" x 3-3/8" x 1-1/16" deep  
[35.7 mm x 85.7 mm x 27 mm deep]

**74R2:** 1-13/32" x 3-3/8" x 1-1/8" deep  
[35.7 mm x 85.7 mm x 28.6 mm deep]

#### Strike Opening

Bolt retaining keeper is stainless steel.

**74R1:** 5/8" x 1-7/16" x 9/16" deep  
[15.9 mm x 36.5 mm x 14.3 mm deep].  
Strike accepts Pullman latch of exit devices without deadlocking bolts.

**74R2:** 5/8" x 1-7/16" x 1/2" deep  
[15.9 mm x 36.5 mm x 12.7 mm deep].

#### Faceplate

Not separate

**74R1:** 1-3/4" x 9 x 11/16"  
[44.5 mm x 228.6 mm x 17.5 mm]

**74R2:** 1-5/8" x 9 x 1/2"  
[41.3 mm x 228.6 mm x 12.7 mm]

#### Latchbolt Projection

**74R1:** 3/4" [19.1 mm]

**74R2:** 1/2" [12.7 mm]

#### Standard Package

Individually boxed with mounting plate shims, mounting screws, and installation instructions.

#### Shipping Weight

2 lbs [0.91 kg].

### Electrical

#### Voltage

Field selectable to match power source of 12/24 VDC. VA7400-16VDC voltage adapter required when using 16 VDC power, available separately. Equipped with a quick connect plug-in type connector.

#### Current Draw

.44A at 12 VDC

.46A at 16 VDC\*

.23A at 24 VDC

\*Requires 16 DC adapter  
(P/N VA7400-16VDC)

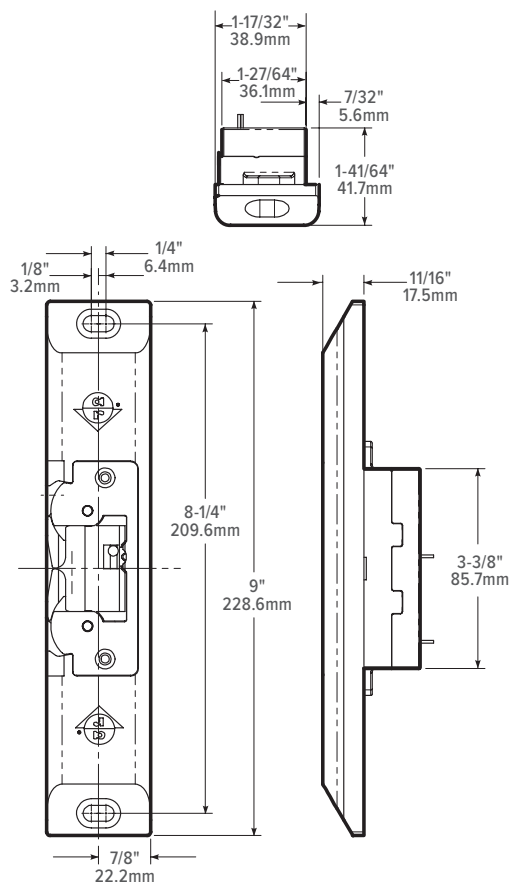
## Fail Safe | Fail Secure

Field selectable fail safe/fail secure

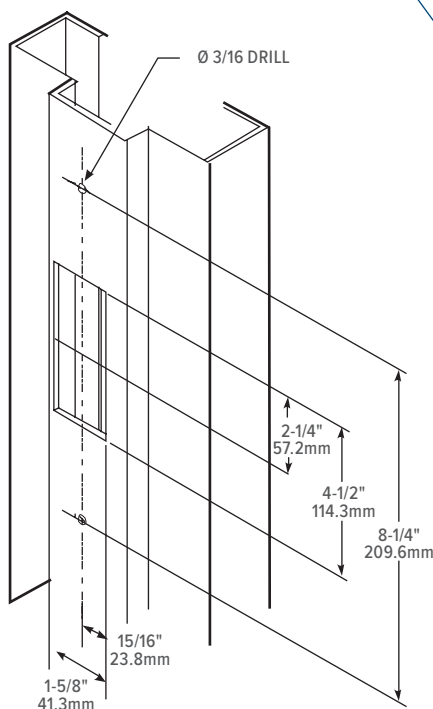
## Options

- Available with two Form 'C' monitoring switches to indicate when the latchbolt is engaged in the strike jaws and a locked/unlocked solenoid status.
- **ELX-ElectroLynx® Adapter**  
Connects Adams Rite electrified products to ElectroLynx system
- **16 VDC Adapter**  
VA7400-16 VDC required when using 16 VDC power

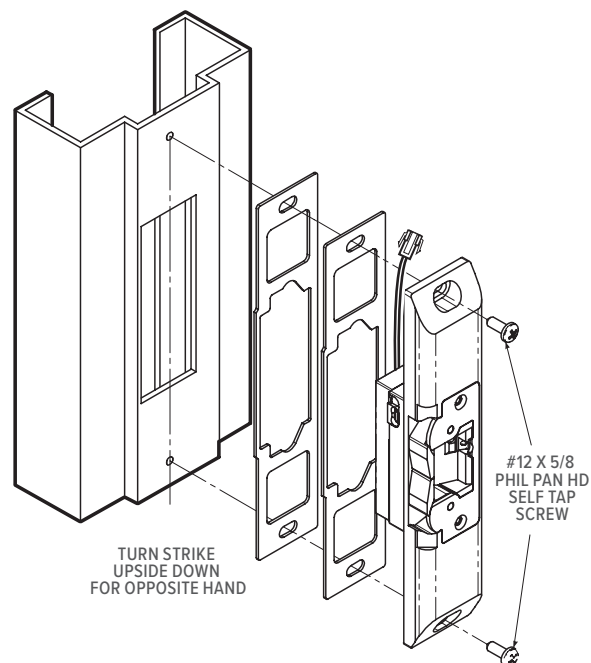
## 74R1 Dimensions



## Jamb Preparation



## Installation



Experience a safer  
and more open world