

**ACCENTRA®**

**ASSA ABLOY**

Experience a safer  
and more open world

# YPL SERIES

## Cylindrical Indicator Lock





## TABLE OF CONTENTS

### Contents

<a href="#">Features, Applications, Specifications</a>	3
<a href="#">How to Order, Finishes</a>	4
<a href="#">Lever Trim</a>	5
<a href="#">Function</a>	6
<a href="#">Indicator Options</a>	6
<a href="#">Latchbolts</a>	7
<a href="#">Strikes</a>	7
<a href="#">Technical Specifications and Listings</a>	8

### Increased Privacy

The cylindrical lock indicator visually displays door status; whether the door is locked or unlocked, thus eliminating potentially embarrassing situations and providing a peace of mind.

Using a standard bored lock door prep, this indicator lock is ideal for new construction or retrofit applications.

### **WARNING**

This product can expose you to lead which is known to the state of California to cause cancer and birth defects or other reproductive harm. For more information go to [www.P65warnings.ca.gov](http://www.P65warnings.ca.gov).



## FEATURES, APPLICATIONS, SPECIFICATIONS

### Features

- Red or Green window display with padlock icon for visual door status
- Cylindrical lock construction for durability and longevity in high use applications
- Patented design
- Privacy function (F76A) with push button lock and for automatic unlock when inside lever is pushed down
- One motion for egress
- Coin turn or emergency key/tool for emergency access
- Through-bolted for robust operation
- Ideal for retrofit

### Applications

- Office buildings
- Restaurants
- Schools
- Hospitals
- Warehouses
- Airports
- Places of Worship
- Convenience Stores
- Gas Stations
- Travel Centers



### Specifications

<b>Door Prep</b>	ANSI/SDI A250.14
<b>Door Thickness</b>	1-3/4" (44mm) standard, accommodates 1-3/8" (35mm) with adapter plate kit (ordered separately, specify APK-2)
<b>Backset</b>	2-3/4" (70mm) standard, 2-3/8" (60mm) optional
<b>Handing</b>	Non-handed
<b>Latchbolt</b>	Plain, 2-3/4" (70mm) backset x 1-1/8" (29mm) square corner front with 1/2" (13mm) throw standard, 2-3/8" (60mm) x 1" (25mm) optional
<b>Strike</b>	ANSI strike 4-7/8" x 1-1/4" x 1-1/4" (124mm x 32mm x 32mm) lip to center
<b>ANSI/BHMA</b>	2-3/4" Backset: Certified Grade 1, ANSI/BHMA A156.2, Series 4000 2-3/8" Backset: Certified Grade 2, ANSI/BHMA A156.2, Series 4000
<b>UL/cUL</b>	Listed for 3 hour fire doors
<b>Warranty</b>	3 years





## HOW TO ORDER, FINISHES

Trim Design	Function	Hand	Latch	Strike	Door Thickness	Finish
<b>AU</b> - Augusta <b>PB</b> - Pacific Beach <b>TB</b>	<b>YPL02</b> - Privacy, Bedroom or Bath <b>YPL42</b> - Privacy, Bedroom or Bath	<b>RH</b> standard; units are non-handed.	<b>693A</b> standard; see page 7 for options.	<b>497</b> standard; see page 7 for options.	<b>1-3/4"</b> Use spacer plates for 1-3/8"; see page 8	<b>605</b> <b>613E</b> <b>626</b> <b>BSP</b>

### Ordering Example

Trim Design	Function	Hand	Latch	Strike	Door Thickness	Finish
TB	YPL42	RH	693A	497	1-3/4"	626

### Finishes

ANSI/BHMA Code Finish Description			
<b>605</b> Bright Brass, Clear Coated	<b>613E</b> Dark Oxidized Satin Bronze - equivalent	<b>626</b> Satin Chrome Plated	<b>BSP</b> Black Suede Powder Coat
			

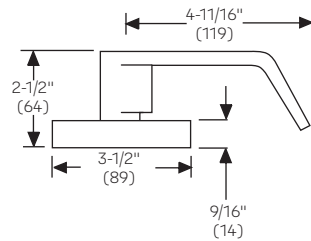


## TRIM DESIGNS

### Augusta AU

Lever: Cast Zinc

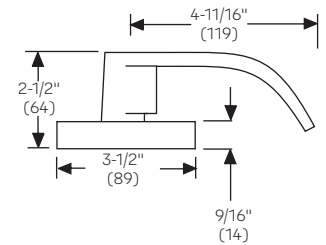
Rose: Wrought Brass



### Pacific Beach PB

Lever: Cast Zinc

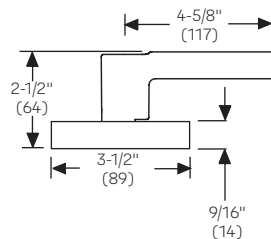
Rose: Wrought Brass



### TB

Lever: Cast Zinc

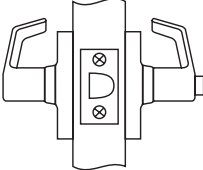
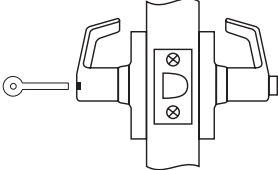
Rose: Wrought Brass



AU and PB levers comply with codes requiring lever to return to within 1/2" (13mm) of door face.  
Dimensions shown are in inches/mm.

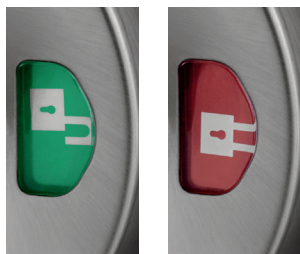


## FUNCTIONS

YPL02 (F76A)	YPL42 (F76A)
<b>Privacy Lock with Indicator (Coin Turn Override)</b> <ul style="list-style-type: none"> <li>• Either lever operates latchbolt unless outside lever is locked by pushbutton inside.</li> <li>• Pushbutton inside changes indicator display status outside.</li> <li>• Rotating inside lever and/or closing door unlocks outside lever and changes indicator display status outside.</li> <li>• Coin turn in outside lever for emergency access.</li> <li>• Inside lever always active.</li> <li>• Outside lever rigid when in locked position.</li> </ul> <div style="text-align: center;">  </div> <div style="display: flex; justify-content: space-around; width: 100%;"> <span>Outside</span> <span>Inside</span> </div>	<b>Privacy Lock with Indicator (EM Key/Tool Override)</b> <ul style="list-style-type: none"> <li>• Either lever operates latchbolt unless outside lever is locked by pushbutton inside.</li> <li>• Pushbutton inside changes indicator display status outside.</li> <li>• Rotating inside lever and/or closing door unlocks outside lever and changes indicator display status outside.</li> <li>• Emergency key/tool (provided) inserted and turned in outside lever will unlock door from outside.</li> <li>• Inside lever always active.</li> <li>• Outside lever rigid when in locked position.</li> </ul> <div style="text-align: center;">  </div> <div style="display: flex; justify-content: space-around; width: 100%;"> <span>Outside</span> <span>Inside</span> </div>

## Indicator Display

YPL Series locks are provided standard with a visual display that shows red with a closed shackle padlock for locked and green with an open shackle padlock for unlocked. The padlock icons are positioned in a manner that allows for the locks to be non-handed.



Other options may be available by special application, contact Customer Service for more information.

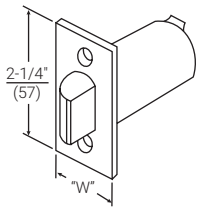


## LATCHBOLTS

Model No. 693A supplied standard with all YPL locksets. Standard latchbolt has a 2-1/4" (57mm) x 1-1/8" (29mm) beveled square front with a 2-3/4" (70mm) backset and a 1/2" (13mm) throw bolt. Optional 2-3/8" latchbolt available to order.

Model	Front	Backset	Throw	"W" Front Width	Latch Diameter
693A	Square	2-3/4" (70mm)	1/2" (13mm)	1-1/8" (29mm)	1" (25mm)
378PL	Square	2-3/8" (60mm)	1/2" (13mm)	1" (25mm)	7/8" (22mm)*

\*1/8" sleeve supplied to accommodate 1" preps.



## STRIKES

Model No. 497 ANSI Strike (Standard)	Model No. 371 T-Strike	Model No. 70S Full Lip	Model No. 202 Strike Box
<p>For door and frames with ANSI/SDI A250.14 preparations 4-7/8" x 1-1/4" x 1-1/4" (124mm x 32mm x 32mm) lip to center supplied standard. Other lip lengths available by special order. Available with optional 202 Strike Box. Specify 497 x 202.</p>	<p>2-3/4" x 1-1/8" x 1-1/4" (70mm x 29mm x 32mm) lip to center supplied standard. Other lip lengths available by special order. Wrought strike box supplied.</p>	<p>2-1/4" x 1-3/4" x 1-1/4" (57mm x 44mm x 32mm) lip to center with full lip anti-rattle tab.</p>	<p>Available to special order. Specify x 202.</p>



## TECHNICAL SPECIFICATIONS AND LISTINGS

### ADA

The YPL Series meets accessibility guidelines of the Americans with Disabilities Act and the requirements of the Uniform Federal Accessibility Standards and ANSI 117.1, all requiring ease of accessibility for the handicapped.



### ANSI/BHMA

2-3/4" Backset: Certified ANSI/BHMA A156.2, Series 4000 Grade 1.

2-3/8" Backset: Certified ANSI/BHMA A156.2, Series 4000 Grade 2.



### Fire Listings

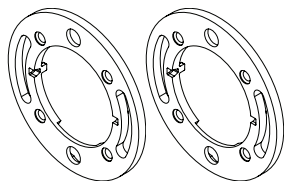


UL/cUL Listed for up to 3 hours

Note: Any retrofit or other field modification to a fire rated opening can potentially impact the fire rating of the opening, and ASSA ABLOY ACCENTRA® makes no representations or warranties concerning what such impact may be in any specific situation. When retrofitting any portion of an existing fire rated opening, or specifying and installing a new fire-rated opening, please consult with a code specialist or local code official (Authority Having Jurisdiction) to ensure compliance with all applicable codes and ratings.

### Door Thickness

The YPL Series installs on 1-3/4" thick doors standard. It can also be used on 1-3/8" thick doors by adding adapter plates. To order specify adapter plate kit model number APK-2.



APK-2

### Installation

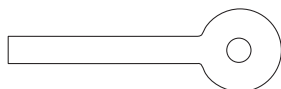
YPL Series Cylindrical locks conform to ANSI/SDI A250.14 hardware preparations for steel doors and steel frames.

### Warranty

The YPL Series cylindrical lever locks carry a three-year warranty.

### Emergency Key Tool

Provided standard with YPL42 function for emergency access when locked. To order separately, specify part number 14-4602-1002-048.









The ASSA ABLOY Group is the global leader in access solutions.  
Every day, we help billions of people experience a more open world.

ASSA ABLOY Opening Solutions leads the development within door openings and products for access solutions in homes, businesses and institutions. Our offering includes doors, frames, door and window hardware, mechanical and smart locks, access control and service.

**ACCENTRA®**  
**ASSA ABLOY**

#### TECHNICAL SUPPORT

(troubleshooting, product use and application, returns)

Tel: 855-557-5078

Email: [techsupport.accentra@assaabloy.com](mailto:techsupport.accentra@assaabloy.com)

#### CUSTOMER SUPPORT

(orders, product configuration, pricing, lead-time)

Tel: 855-557-5078 x2

Email: [Customerservice.Accentra@assaabloy.com](mailto:Customerservice.Accentra@assaabloy.com)

**U.S.A.:**  
**ASSA ABLOY ACCENTRA®**  
225 Episcopal Road  
Berlin, CT 06037-4004  
Tel: 1-800-438-1951  
Fax: 1-800-338-0965  
[www.accentra-assaabloy.com](http://www.accentra-assaabloy.com)

**Canada:**  
**ASSA ABLOY Door Security Solutions Canada**  
160 Four Valley Drive  
Vaughan, Ontario L4K 4T9  
Tel: 1-800-461-3007  
Fax: 1-800-461-8989  
[assaabloydss.ca](http://assaabloydss.ca)

**International:**  
**ASSA ABLOY Americas International**  
Tel: 1-905-821-7775  
Fax: 1-905-821-1429  
[assaabloyai.com](http://assaabloyai.com)