



# 222N

## Neoprene Surface Automatic Door Bottom

### PRODUCT CUT SHEET

#### Material

Aluminum Alloy 6063, T6 Temper  
Synthetic EPDM Rubber in Polypropylene Thermoplastic Matrix  
Neoprene is Black

- BHMA Certified to ANSI/BHMA A156.22, 1,000,000 Cycle Test-Grade 1
- BHMA Certified to ANSI/BHMA A156.22 Performance Tests for Heat and Cold
- Very Good Abrasion Resistance, Tensile Strength and Memory
- Flame-Resistant
- Moisture-Resistant
- Temperature Range -81°F to 275°F
- Good Resistance to Ozone, Sunlight and Aging
- Mounts on Push Side of Door
- Use with a Threshold for Maximum Sealing Capability
- Nylon Brush Recommended for Carpet Applications Where No Threshold is Provided
- Specify Exact Net Length Required to Avoid Field Sizing
- ADB's from 12" to 18" Can be Cut Down ½". ADB's 20" and Over Can be Cut Down up to 1 ½"
- Minimum Length 11 ½", Maximum Length 60"
- ¾" Max Drop
- Steel End Caps Furnished Standard – Black Finish

#### Finishes

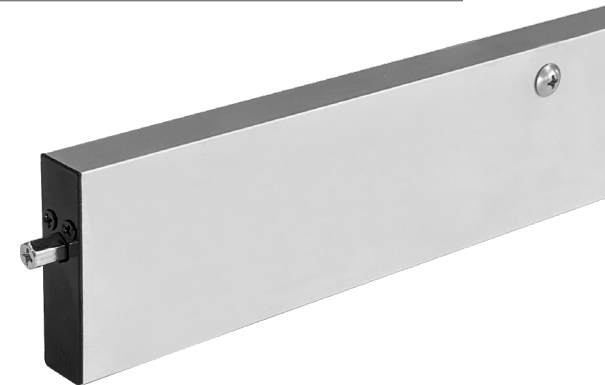
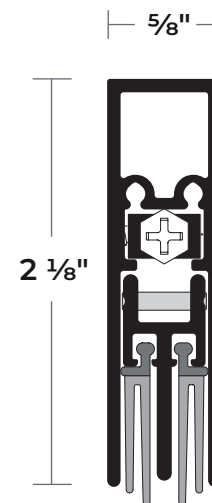
222NA Anodized Aluminum  
222NDKB Dark Bronze

#### Options

Lead Insert Available for Radiation Shield –  
Specify 'Lead Lined'



PROJECT:
SUBMITTED BY:
DATE:
NOTES:



NGP-GKT-222N-PCS-0925-A

#### NATIONAL GUARD PRODUCTS, INC.

##### MEMPHIS

4985 East Raines Road  
Memphis, TN 38118

##### CARSON CITY

3689 Arrowhead Drive  
Carson City, NV 89706

**Fax:** (800) 255-7874

**Email:** info@ngp.com

**Quotes:** quotes@ngp.com

**Orders:** orders@ngp.com

**ngp.com**  
1-800-NGP-RUSH