



# SLSS1-8-SC

Stainless Steel Sliding Door Hardware — Barn Door Top Mount

## PRODUCT CUT SHEET

### Top Mount Round Track System (With Soft Close) – Track Length 98 7/16"

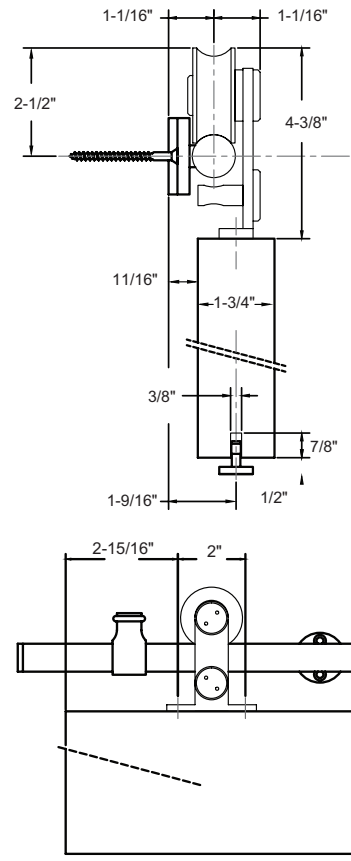


- Fits 1" To 2" Thick Door Panel
- Brushed Stainless Steel 304
- Side Wall Mount
- Nylon Coated Stainless Steel Wheels for Smooth Operation
- Max Weight Load 220 lbs.
- ANSI/BHMA A156.14 Grade 1 Certified to 100,000 Cycles Including Soft Close Feature
- 5-year Warranty
- Order Two Sets for Bi-parting Applications
- Soft Close / Open Hardware is Included for Both Directions in Addition to the SLSS1-8 Complete Kit Contents

#### Complete Kits Include:

- (1) Track with Soft Close
- (2) Door Stops
- (2) Hangers
- (1) Floor Guide

SLSS1-8 includes: (6) Wall Attachments



Note: For Door Sizing Refer to Installation Instruction.

NGP-SLSS1-8-SC-PCS-0920-B

PROJECT:

SUBMITTED BY:

DATE:

NOTES: