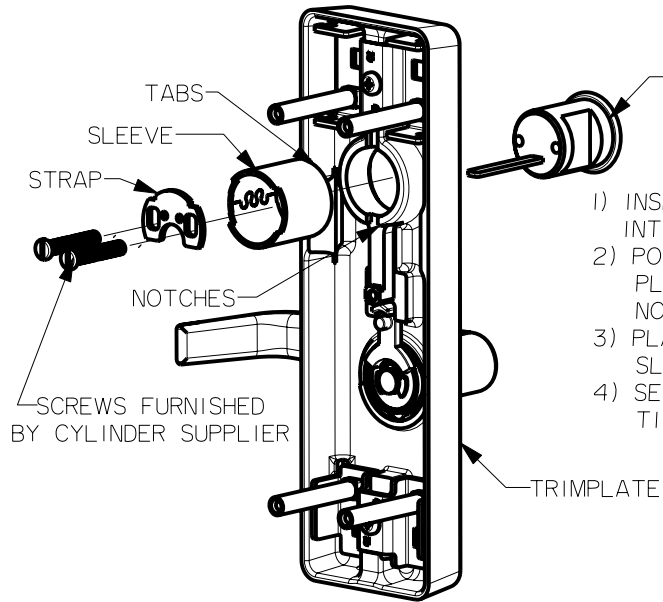


4900 SERIES TRIM INSTRUCTIONS

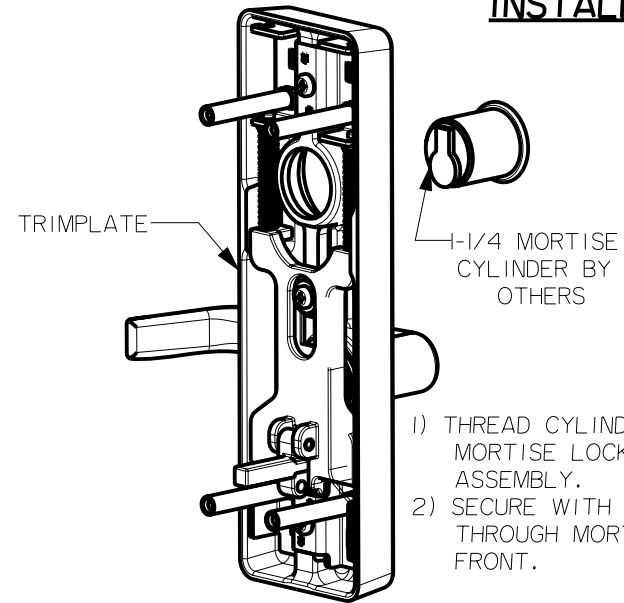
(SEE TEMPLATE FOR DOOR PREPARATION)

RIM CYLINDER INSTALLATION



- 1) INSERT RIM CYLINDER INTO TRIM.
- 2) POSITION SLEEVE BY PLACING TABS INTO THE NOTCHES IN THE TRIM PLATE.
- 3) PLACE STRAP ON THE SLEEVE.
- 4) SECURE CYLINDER BY TIGHTENING SCREWS.

MORTISE CYLINDER INSTALLATION



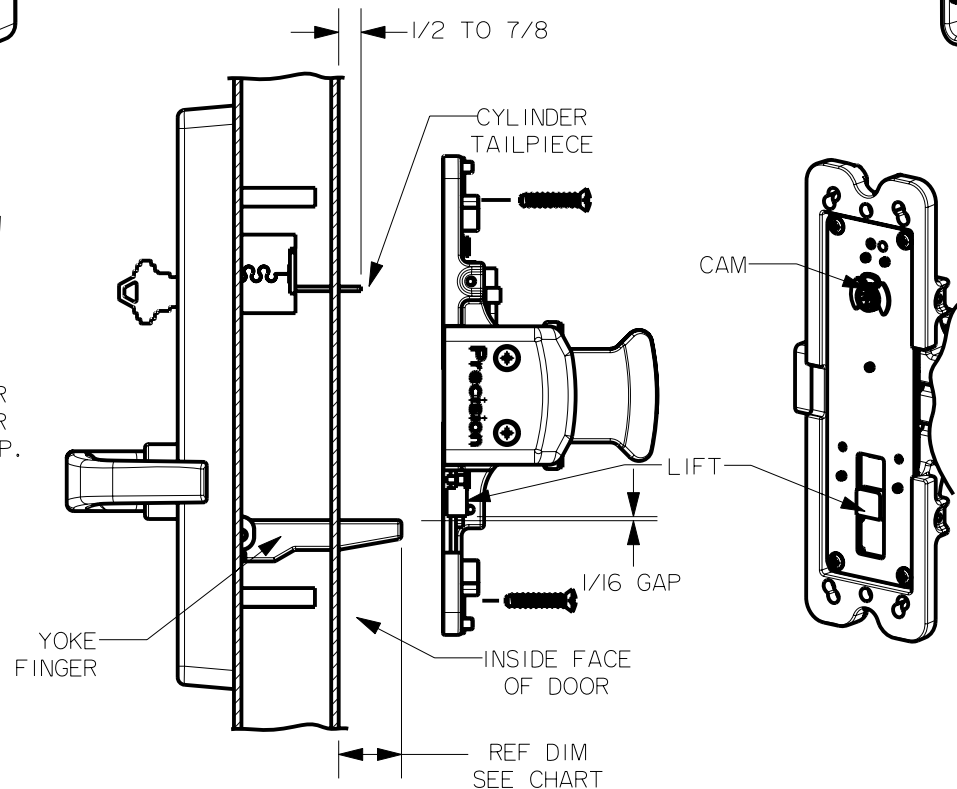
- 1) THREAD CYLINDER INTO THE MORTISE LOCK THROUGH TRIM ASSEMBLY.
- 2) SECURE WITH SCREW THROUGH MORTISE LOCK FRONT.

TRIM INSTALLATION

FOR DEVICES WITH CYLINDER FUNCTION, INSERT CYLINDER TAILPIECE INTO THE CAM

FOR DEVICES WITH ACTIVE LEVER OR KNOB MAKE SURE YOKE FINGER IS UNDER THE LIFT WITH 1/16 GAP.

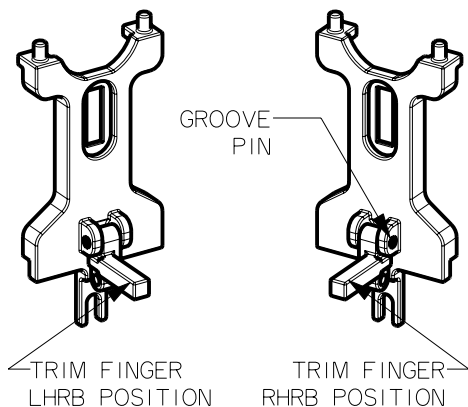
SECURE THE CHASSIS TO THE TRIM WITH SCREWS



NOTE:
REF DIM DOES NOT APPLY TO MORTISE DEVICE TRIMS

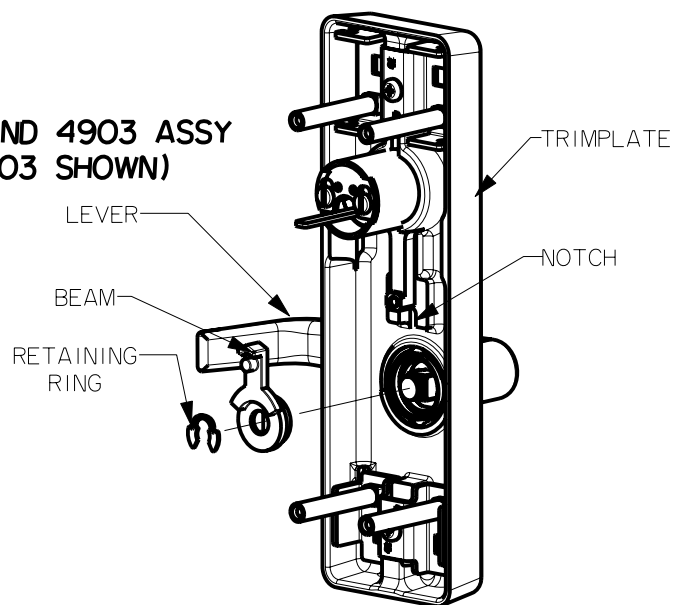
DEVICE TYPE	DOOR THK.	REF.DIM
TOUCHBAR DEVICE	1-3/4	1-1/16
	2	13/16
	2-1/4	9/16
CROSSBAR DEVICE	1-3/4	1/2
	2	1/4
	2-1/4	FLUSH

HAND CHANGE MORTISE YOKE ASSEMBLY



- 1) REMOVE THE TRIM FINGER BY REMOVING THE GROOVE PIN.
- 2) ROTATE FINGER 180° AND REASSEMBLE WITH GROOVE PIN

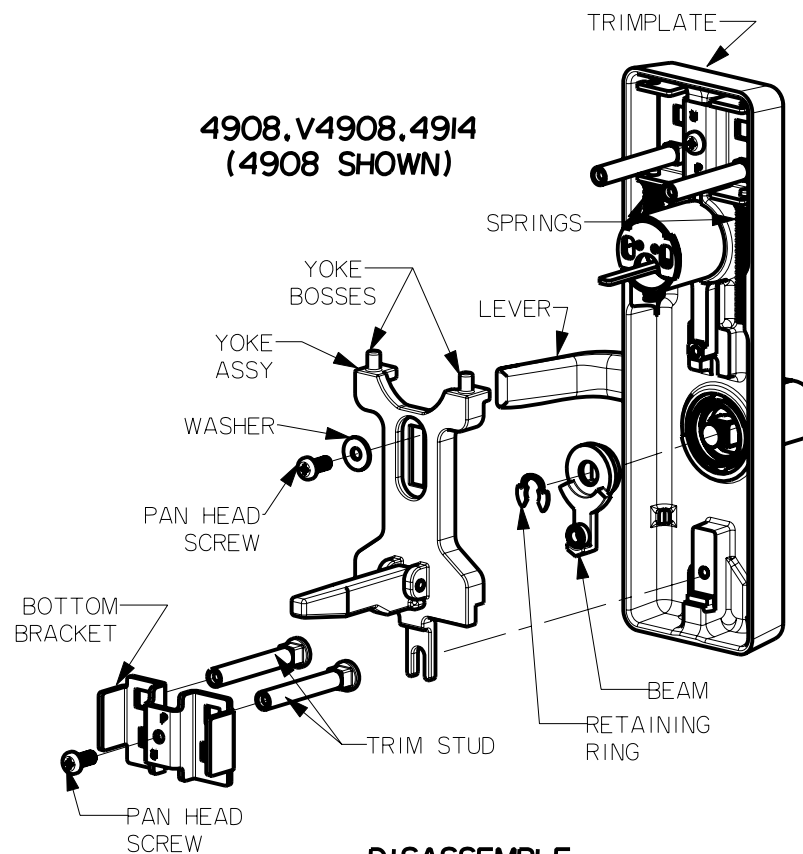
4902 AND 4903 ASSY (4903 SHOWN)



- 1) REMOVE BEAM BY REMOVING RETAINING RING
- 2) ROTATE LEVER 180°
- 3) POSITION BEAM IN THE NOTCH, SECURE IT TO THE LEVER WITH RETAINING RING.

CHANGING HAND

4908, V4908, 4914 (4908 SHOWN)



DISASSEMBLE

- 1) PAN HEAD SCREW, BOTTOM TRIM STUDS AND BRACKET.
- 2) YOKE ASSEMBLY BY REMOVING SCREW.
- 3) BEAM FROM LEVER BY REMOVING RETAINING RING.

REASSEMBLE

- 1) ROTATE LEVER 180° AND SECURE IT TO THE BEAM WITH RETAINING RING.
- 2) INSERT YOKE BOSSES INTO SPRINGS AND PUSH UP TO SEAT YOKE ASSEMBLY INTO THE TRIMPLATE AND SECURE WITH SCREW AND WASHER.
- 3) SECURE BOTTOM BRACKET, STUDS WITH SCREW.

TRIM CONVERSION

CHANGING 4902/4903 TRIM TO 4908/4914

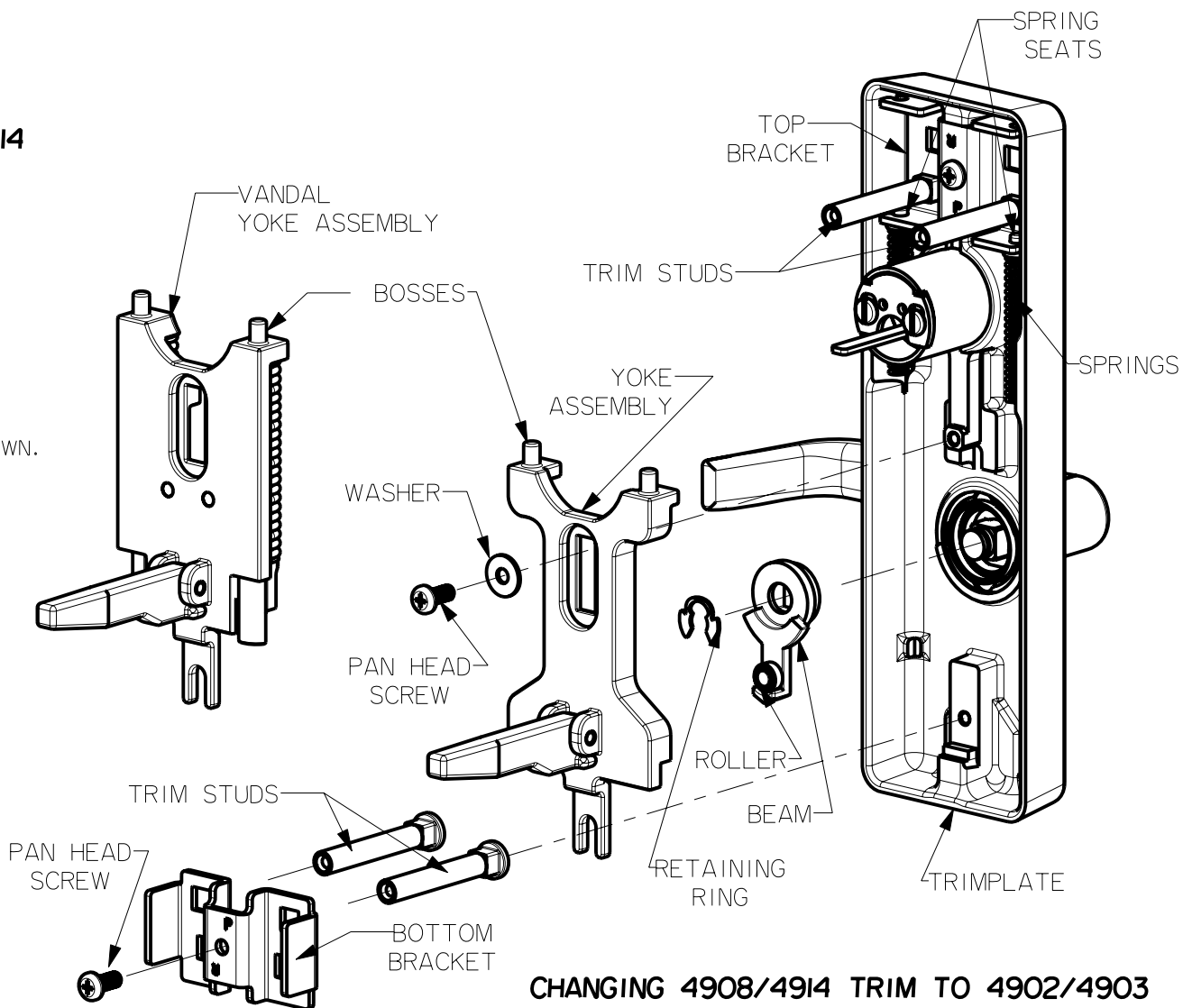
(KIT #FC-08 OR VFC-08)

DISASSEMBLE

- 1) BEAM FROM LEVER BY REMOVING RETAINING RING
- 2) REMOVE BOTTOM BRACKET WITH TRIM STUDS

REASSEMBLE

- 1) ROTATE BEAM 180° AND SECURE IT TO THE LEVER WITH RETAINING RING. PLACE ROLLER ONTO THE BEAM.
- 2) INSERT SPRING SEATS INTO TOP BRACKET AND INSERT SPRINGS ONTO THE SPRING SEATS AS SHOWN.
- 3) INSERT YOKE BOSSES INTO SPRINGS AND PUSH UP TO SEAT YOKE ASSEMBLY INTO THE TRIMPLATE AND SECURE WITH SCREW AND WASHER.
- 4) SECURE BOTTOM BRACKET AND TRIM STUDS WITH PAN HEAD SCREW.



CHANGING 4908 TO V4908

(KIT #B-49-01)

DISASSEMBLE

- 1) REMOVE BOTTOM BRACKET AND STUDS BY REMOVING SCREW.
- 2) PULL OUT YOKE ASSEMBLY BY REMOVING SCREW AND WASHER.

REASSEMBLE

- 1) INSERT VANDAL YOKE BOSSES INTO SPRINGS AND PUSH UP TO SEAT YOKE ASSEMBLY INTO THE TRIMPLATE AND SECURE WITH SCREW AND WASHER.
- 2) SECURE BOTTOM BRACKET, TRIM STUDS WITH PAN HEAD SCREW.

CHANGING 4908/4914 TRIM TO 4902/4903

DISASSEMBLE

- 1) BOTTOM BRACKET, TRIM STUDS AND SCREW.
- 2) YOKE, SPRINGS AND SPRING SEATS BY REMOVING SCREW.
- 3) BEAM BY REMOVING RETAINING RING.

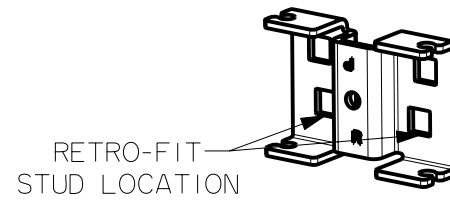
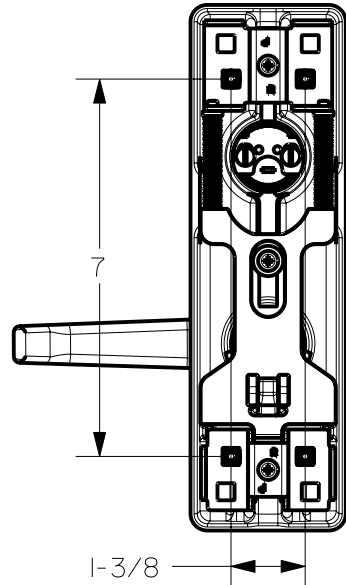
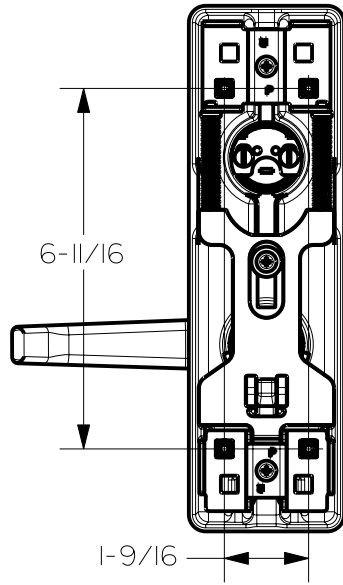
REASSEMBLE

- 1) ROTATE BEAM 180° AND PLACE IN THE NOTCH IN THE TRIMPLATE AND SECURE IT TO THE LEVER WITH RETAINING RING.
- 2) ASSEMBLE TRIM STUDS THRU BOTTOM BRACKET AND SECURE TO TRIMPLATE WITH PAN HEAD SCREW

RETRO-FIT APPLICATIONS

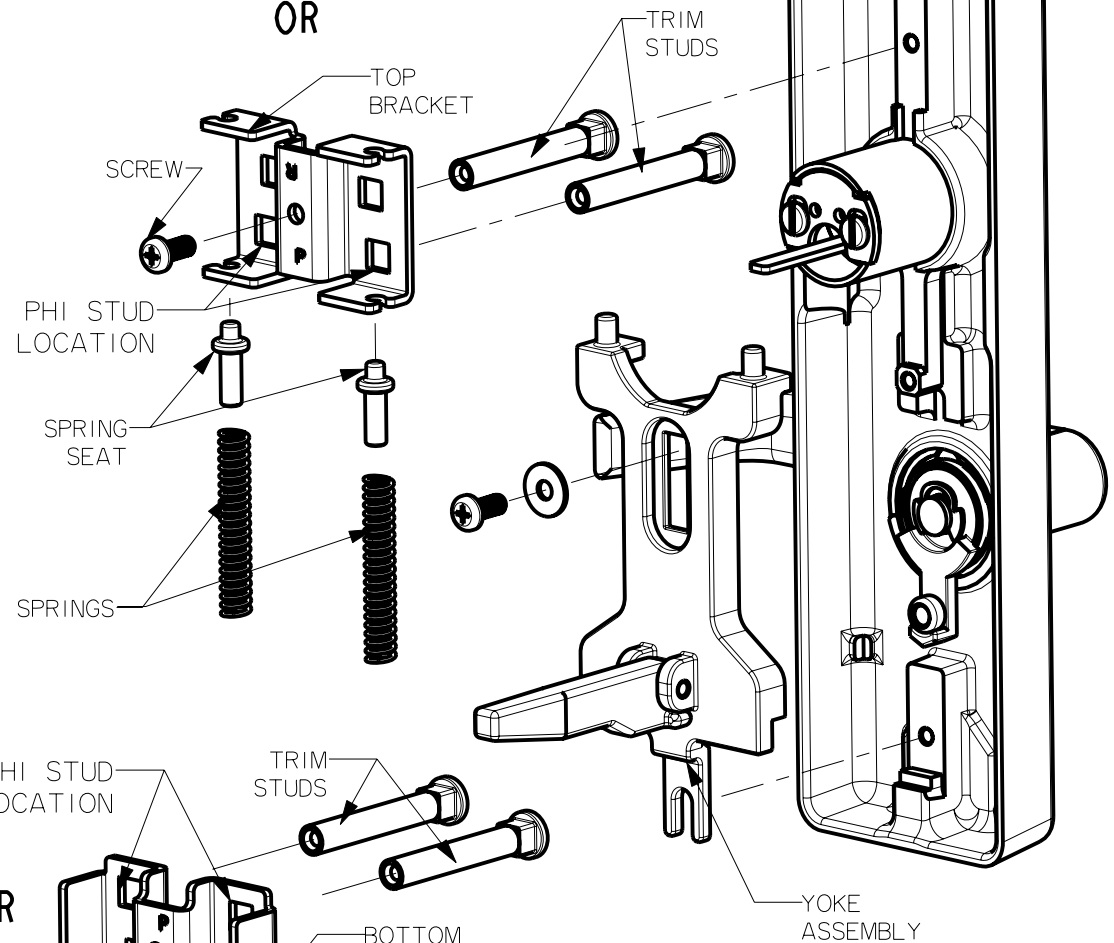
PHI STUD LOCATION

RETRO-FIT STUD LOCATION



RETRO-FIT STUD LOCATION

OR



RETRO-FIT STUD LOCATION

PHI STUD LOCATION

TRIM STUDS

BOTTOM BRACKET

OR

SCREW

CHANGING STUD LOCATIONS

- 1) REMOVE YOKE ASSEMBLY, SCREWS AND BRACKETS
- 2) ROTATE BRACKETS 180°.
- 3) PUSH TRIM STUDS THRU BRACKET IN CORRECT LOCATION.
- 4) REPLACE SPRING SEATS AND SPRINGS INTO TOP BRACKET
- 5) REATTACH TOP BRACKET AND YOKE ASSEMBLY.
- 6) FASTEN BOTTOM BRACKET.

STANLEY

phi

DRWG 02560-11-000 DATE 12/01/04 REVISION A

Precision Hardware
 a Division of Stanley Security Solutions, Inc.
www.stanleysecuritysolutions.com