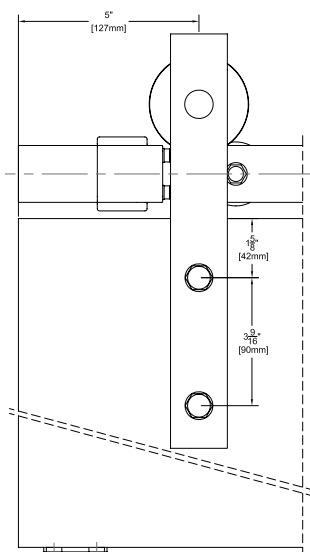
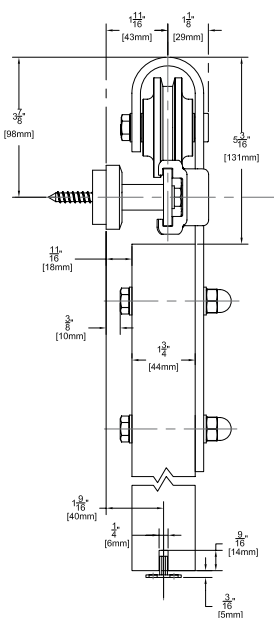


# Builders Series Flat Track Sliding Door Hardware System

## BLD-FT-01 for Wood Doors

For Sliding Panels up to 240 lbs.



### Configurations:

- Single
- Bi-parting

### Installations:

- Side Wall Mount (only)

### Features:

- Solid nylon wheel for smooth operation
- 240 lb. panel capacity
- Optional Soft Close
- 5 year warranty

### Finishes:

- Black Suede Powder Coated Steel (BLD-FT-01BSP)
- Industrial Steel Zinc Coated Steel (BLD-FT-01IS)

### BLD-FT-01 Kits Include:

- 1 ea **BLD-FT\_/\_** Steel Flat Track
- 5 ea **BLD-99\_** Steel Track Brackets
- 2 ea **BLD-01-\_** Steel Strap Mount Hangers
- 2 ea **BLD-77** Anti-Rise Discs
- 1 ea **102N** Mortised Type Nylon Guide
- 2 ea **BLD-11-\_** Steel Track Stops Mounting Hardware

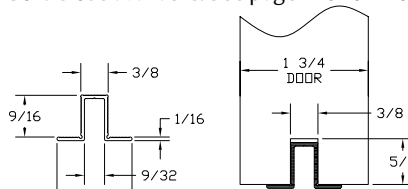
Standard Kit Sizes			
Part Number	Material	Track Length	Door Width
BLD-FT-01IS/6	Industrial Steel	72"	36"
BLD-FT-01IS/8	Industrial Steel	96"	48"
BLD-FT-01BSP/6	Black Suede Powder Coated Steel	72"	36"
BLD-FT-01BSP/8	Black Suede Powder Coated Steel	96"	48"

Custom lengths are available. Please contact the factory to order.

### Options: See page 277

- Bottom Channel **94A**
- Roller Guide **106R/94**
- Side Wall Mortised Type Guide **102WN-KIT**
- Polypropylene Guide Rail **EPD3BL** For Use With 102N
- 5/8" Spacer **BLD-SPACER-58** Pack of 5 5/8" Spacer Recommended for use with 5/8" Gypsum Board When Mounting Track Directly to Gypsum Board
- 1/2" Spacer **BLD-SPACER-12** Pack of 5 1/2" Spacer Recommended for use with 1/2" Gypsum Board When Mounting Track Directly to Gypsum Board
- 3/8" Spacer **BLD-SPACER-38** Pack of 5 3/8" Spacer Recommended for use with 3/8" Gypsum Board When Mounting Track Directly to Gypsum Board

Soft Close available. See page 279 for more information.



NOTE: Alternate route dimension when using optional EPD3BL

800-824-3018 | [www.assaabloydooraccessories.us](http://www.assaabloydooraccessories.us)

Check the web site for the up-to-date catalog

Copyright © 2015-2018, Pemko Manufacturing Co., an ASSA ABLOY Group company. All rights reserved. Reproduction in whole or in part without the express written permission of Pemko Manufacturing Co. is prohibited.

# ASSA ABLOY

The global leader in door opening solutions