



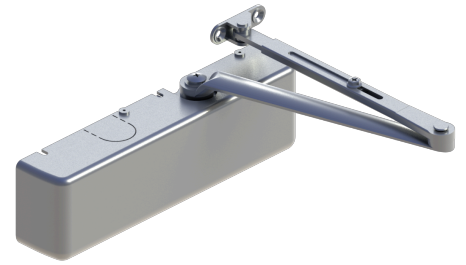
PRODUCT SPECIFICATIONS  
For more information visit [www.hagerco.com](http://www.hagerco.com)

## 5100 Closer x Tri-Pack Arm (Standard 5103)

5100 Closer x 5103 Tri-Pack Arm

### Applications

Grade 1 heavy duty surface door closer adjustable sizes 1-6  
Ideal for schools, hospitals, and other high-use environments



### PRODUCT SPECIFICATIONS

#### Arm:

Tri-pack - regular, top jamb, and parallel arms - standard 15% power adjustment in standard arm for regular and top jamb mount

Box Quantity:  
1

Case Quantity:  
4

#### Certifications:

BHMA Certified ANSI A156.4, adjustable sizes 1-6  
ADA compliant ANSI A117.1 Accessibility Code  
UL/cUL Listed for up to 3 hours  
UL10C Positive Pressure Rated  
UL10B Neutral Pressure Rated  
5100 Door Closer EPD

#### Cover:

Full plastic cover - standard  
Plated metal cover - optional

#### Door Thickness:

1-3/4" (44 mm) - standard  
1-3/8" - 2-1/4" (36 mm - 57 mm) thick door - optional

#### Fasteners:

Self-reaming, self-tapping wood and machine screws  
Sex nuts and bolts

#### Handing:

Non-handed

#### Material:

Arm is forged steel

#### Maximum Door Weight:

330 lbs.

#### Notes:

To maximize hinge life and assist in achieving ADA compliance, Hager recommends the use of anti-friction or ball bearing hinges with our door closer products.  
The recommended temperatures for prolonged closer use is between -40° F (-42° C) and 150° F (66° C)  
Any certified BHMA/ANSI A156.4 door closer, regardless of manufacturer, that is installed and adjusted based on ADA or other reduced opening force requirements may not provide sufficient power to reliably close and latch a door  
If arms are ordered separately, there will be a significant difference in price than if purchased with a closer as a complete assembly.  
See adders for more information (add the list price of the option to the list price of the closer and take standard discounts).  
Accessories may not be available in all finishes. Please contact Hager for availability and lead time.

#### Optional Brackets:

Parallel arm bracket - 5909  
Extra clearance parallel arm bracket - 5935 (2")  
Extra heavy duty parallel arm support bracket - 5111

#### Springs:

One piece seamless steel spring tube  
Double heat-treated, steel-tempered springs  
Precision-machined, heat-treated steel piston

#### Valves:

Adjustable backcheck, sweep, and latching valves- standard  
Delayed action valve - optional  
All valves are staked

#### Warranty:

Lifetime warranty