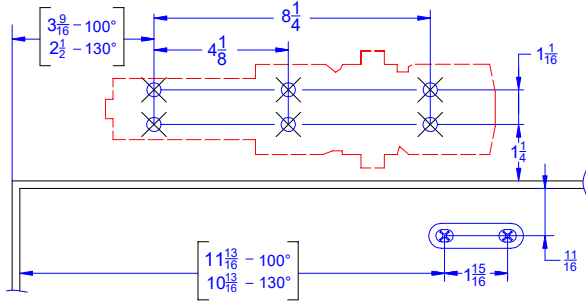
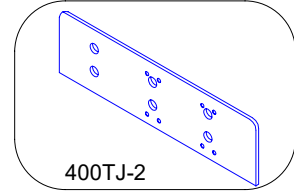


**400 Push Side Top Jamb Drop Plate
Allows 120° Maximum Opening**



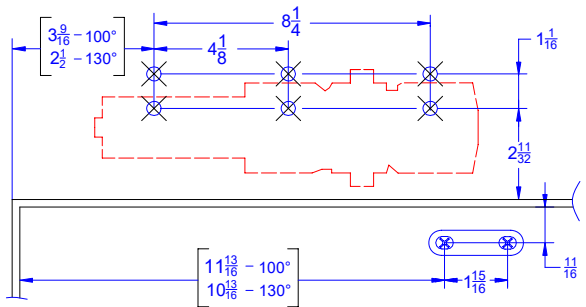
Left hand door shown, use opposite
for right hand door

**400 Push Side Mount :
400TJ-2 Drop Plate**



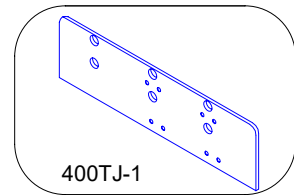
Maximum Reveal : 2-9/16"

**400 Push Side Top Jamb Drop Plate
Allows 120° Maximum Opening**



Left hand door shown, use opposite
for right hand door

**400 Push Side Mount :
400TJ-1 Drop Plate**

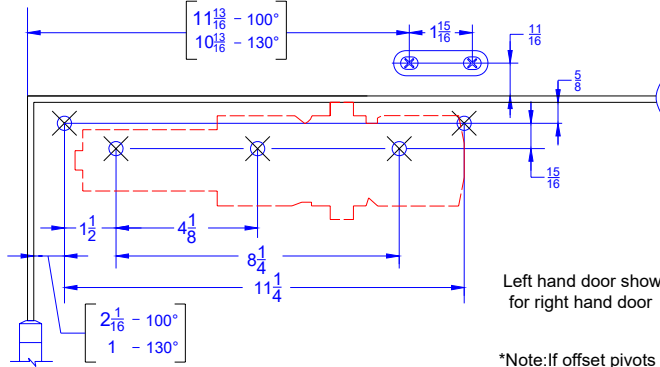


Maximum Reveal : 2-9/16"

INCH	$\frac{11}{16}$	$1\frac{1}{16}$	$1\frac{1}{4}$	$1\frac{15}{16}$	$2\frac{11}{32}$	$2\frac{1}{2}$
M.M.	17	27	32	49	60	64
INCH	$3\frac{9}{16}$	$4\frac{1}{8}$	$8\frac{1}{4}$	$10\frac{13}{16}$	$11\frac{13}{16}$	
M.M.	91	105	210	275	300	

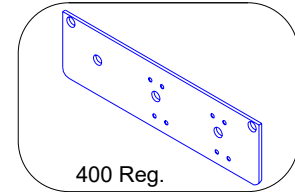
400 Pull Side Regular Drop Plate
Allows 120° Maximum Opening

400 Pull Side Mount :
400Reg. Drop Plate



Left hand door shown, use opposite for right hand door

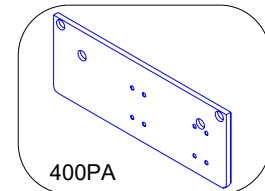
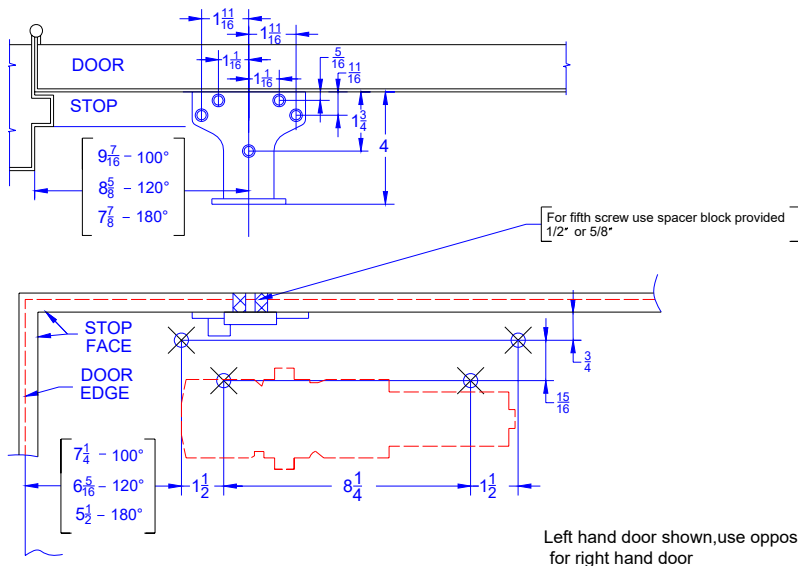
*Note: If offset pivots are used, increase these dimensions by 1/8".



400 Reg.

400PA Push Side Drop Plate
Allows 180° Maximum Opening. Maximum hinge size 5" X 5"

400 Push Side Mount :
400PA Drop Plate



400PA

INCH	$\frac{5}{16}$	$\frac{5}{8}$	$1\frac{11}{16}$	$\frac{3}{4}$	$1\frac{15}{16}$	1	$1\frac{1}{16}$	$1\frac{1}{2}$	$1\frac{11}{16}$	$1\frac{3}{4}$
M.M.	8	16	17	19	24	26	27	38	43	44

INCH	$2\frac{1}{16}$	4	$5\frac{1}{2}$	$6\frac{5}{16}$	$7\frac{1}{4}$	$7\frac{7}{8}$	$8\frac{5}{8}$	$9\frac{7}{16}$	$11\frac{1}{4}$
M.M.	53	102	139	160	184	200	219	240	286