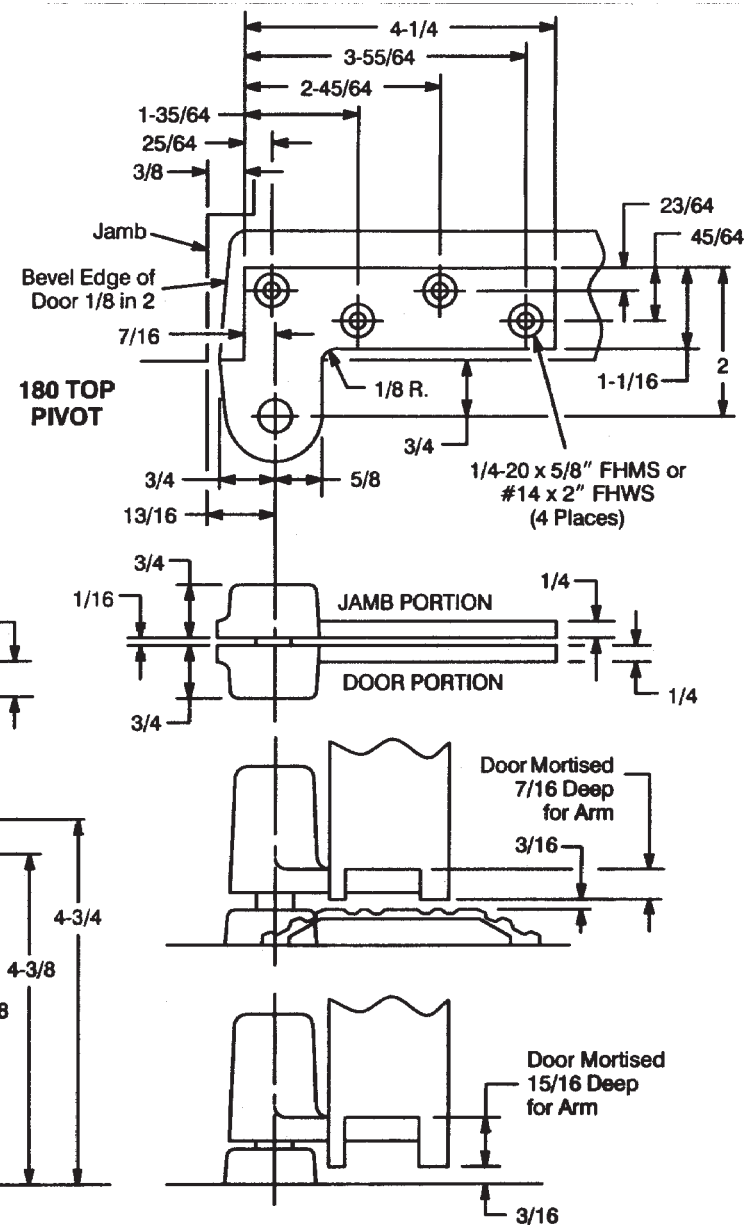
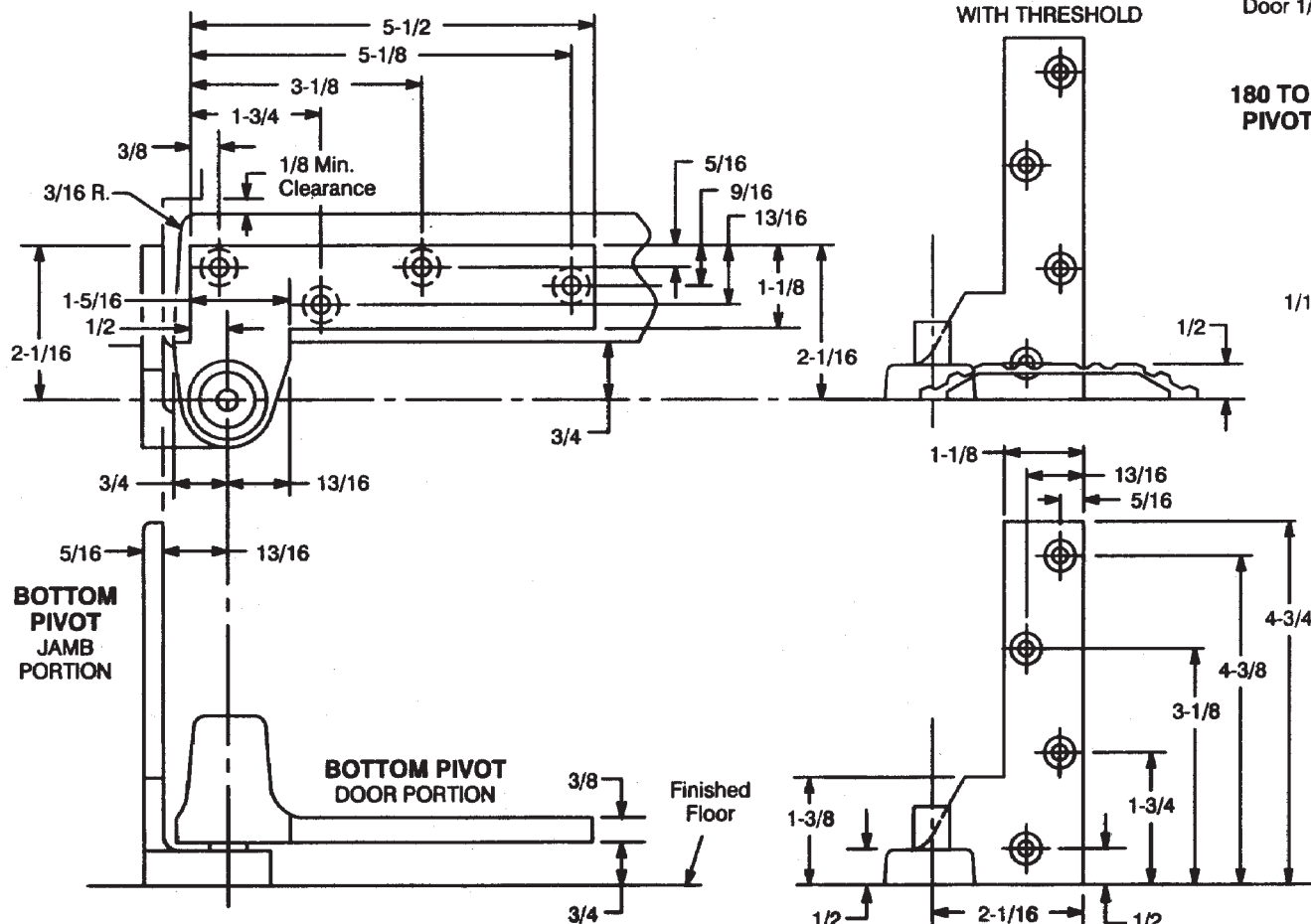


**Notes:**

1. Do not scale drawing.
2. Right hand shown.
3. Suitable reinforcing by others.
4. Pivots drilled for 1/4-20 x 5/8" FHMS or #14 x 1-1/2" FHWS.
5. When jamb portion is installed on top of threshold allow for threshold height when preparing frame and door mortise depth.
6. All dimensions are in inches.



**195 Pivot Set  
3/4" Offset**

**RIXSON**  
ASSA ABLOY

www.rixson.com

TEMPLATE NUMBER

**PS30500**

DATE

**05-09**