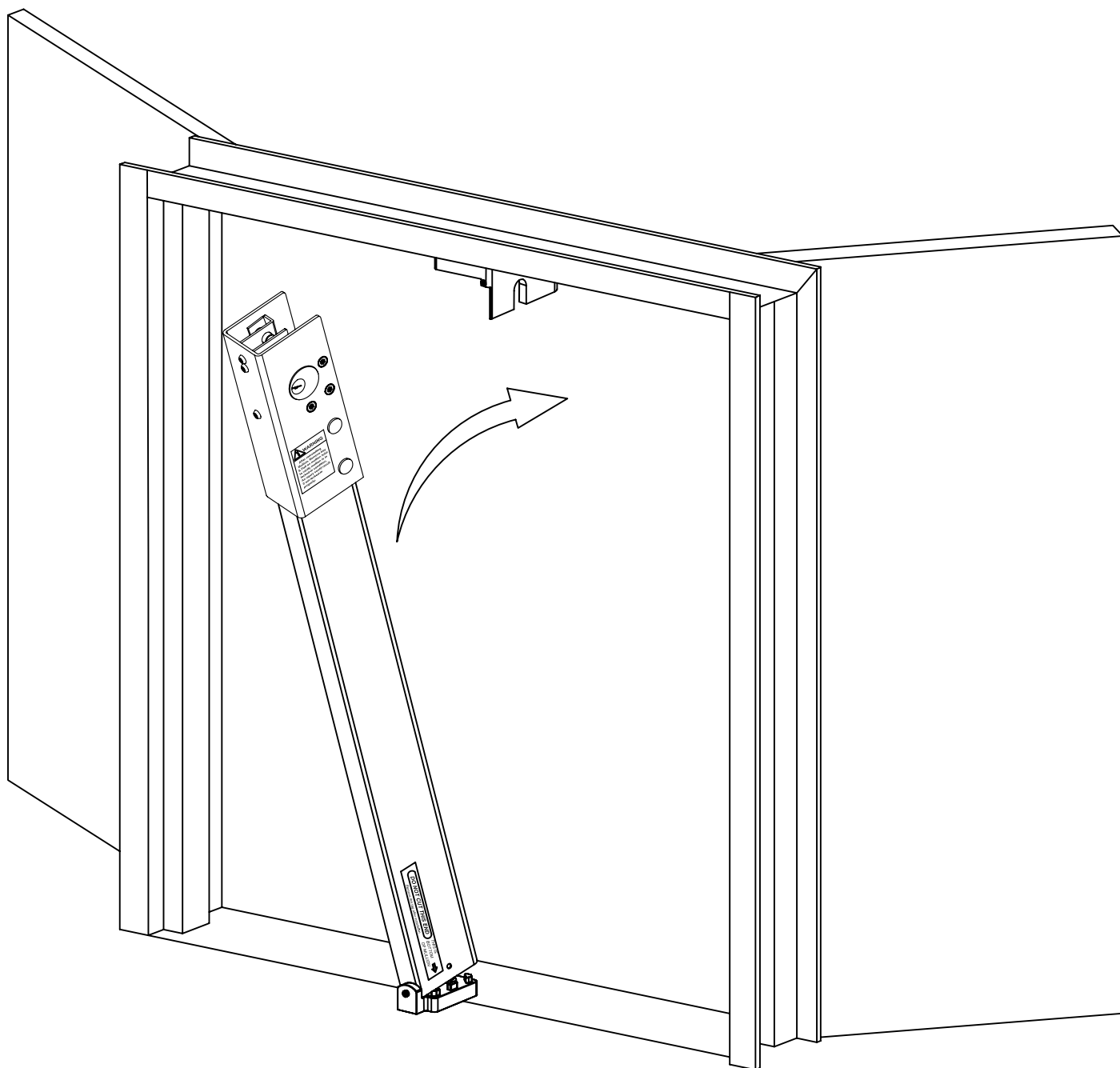
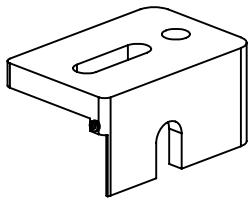


Keyed Removable Mullion Installation Instruction

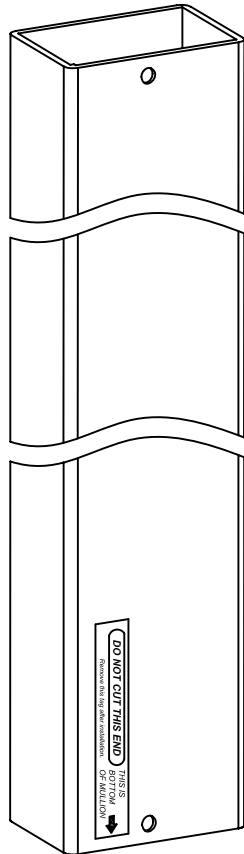
Not for use with Fire Rated Exit Devices



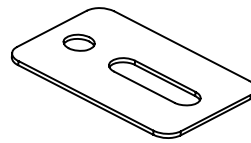
This kit includes the following parts : (Not to scale)



Top Retainer



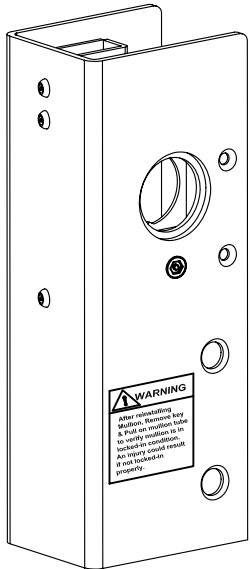
Mullion Tube



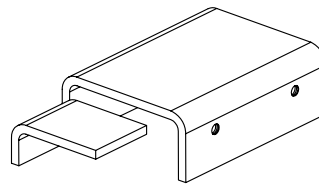
Adjustment Shim



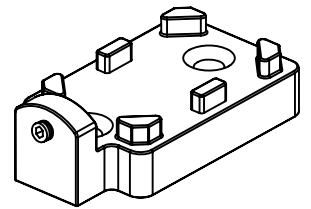
5/32" Allen Wrench



Headcap Chassis Assembly



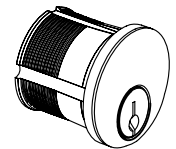
Back Plate



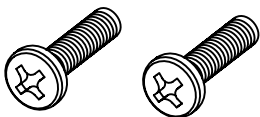
Bottom Retainer



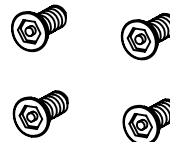
Cylinder Retaining Nut



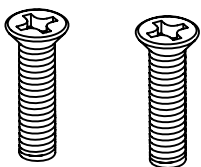
Mortise Cylinder



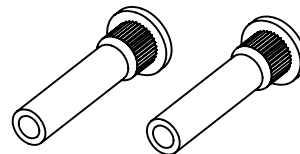
5/16-18 x 1-1/4"
(2 PCS)
Phillips Pan Head
Machine Screw



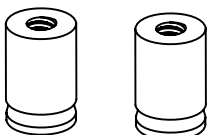
8-32 x 1/4"
(4 PCS)
Undercut Flat Head
Socket Security
Machine Screw



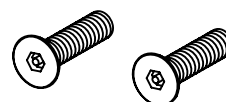
5/16"-18 x 1-1/4"
(2 PCS)
Flat Pan Head
Machine Screw



Thru Bolts
(2 PCS)

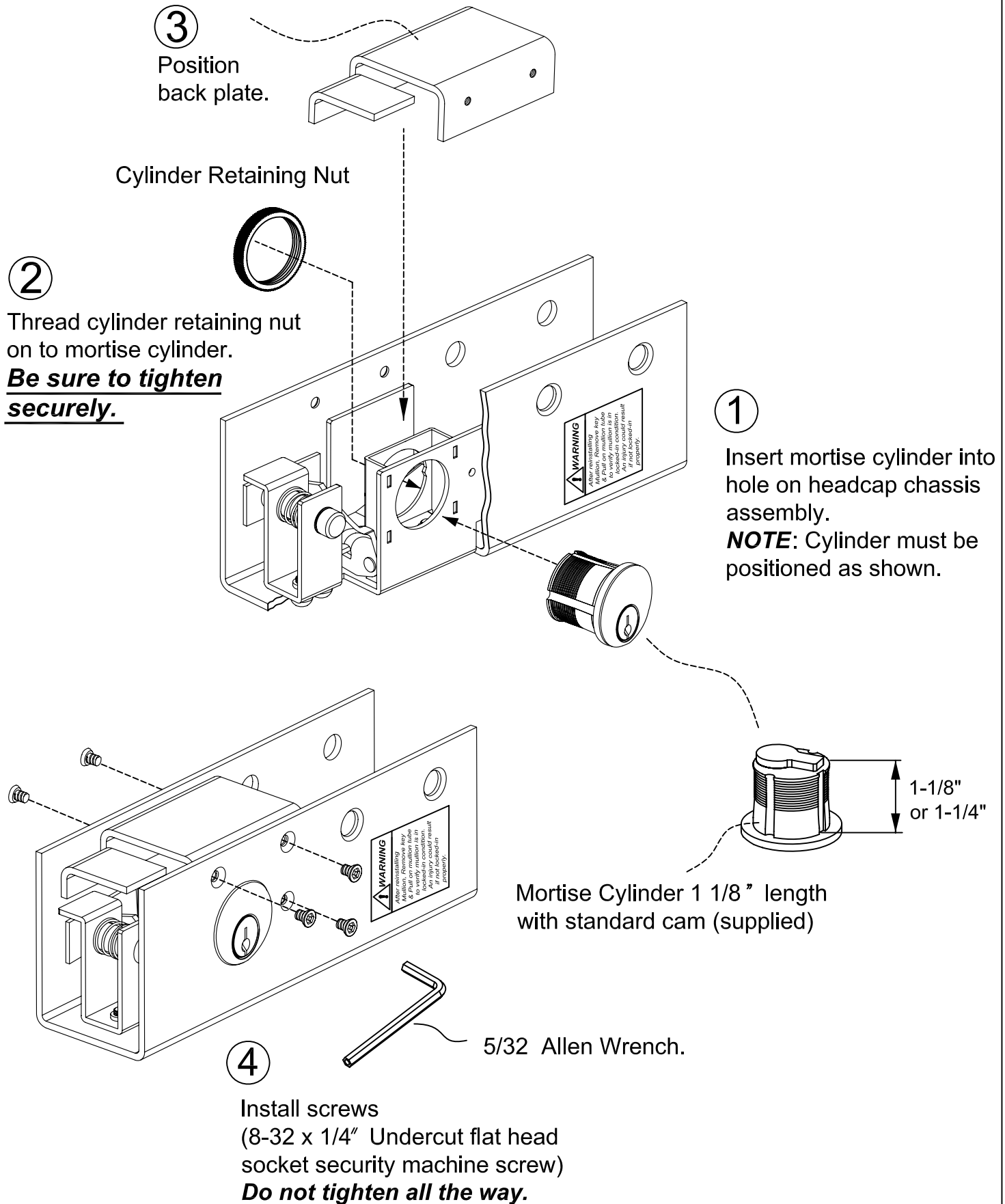


Expansion Anchor
(2 PCS)

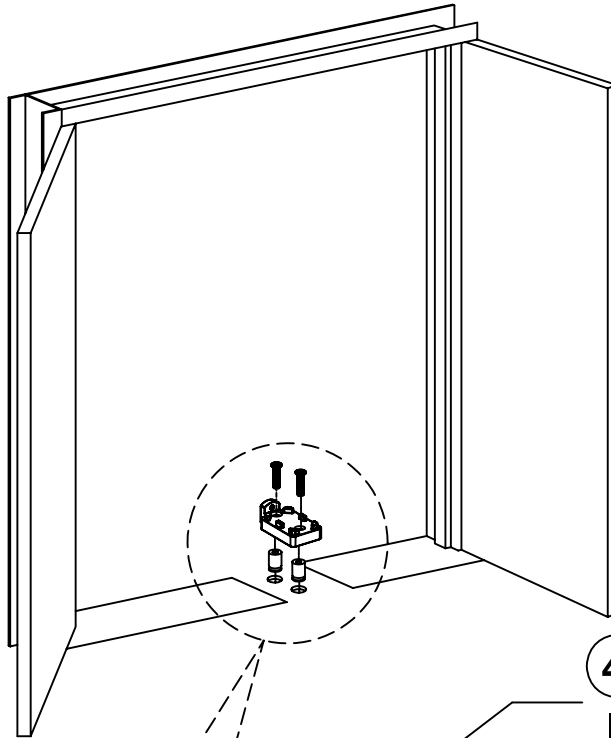


1/4 -20 x1"
(2 PCS)
Flat Head
Socket Security
Machine Screw

Step 1 Prepare the Keyed Headcap Chassis Assembly.



Step 2 Install Bottom Retainer



4

Install screws.
(5/16 -18 x 1 1/4")
Flat Pan Head Machine Screw.

3

Position Bottom Retainer.

2

Install 5/16" x 18
expansion anchors.

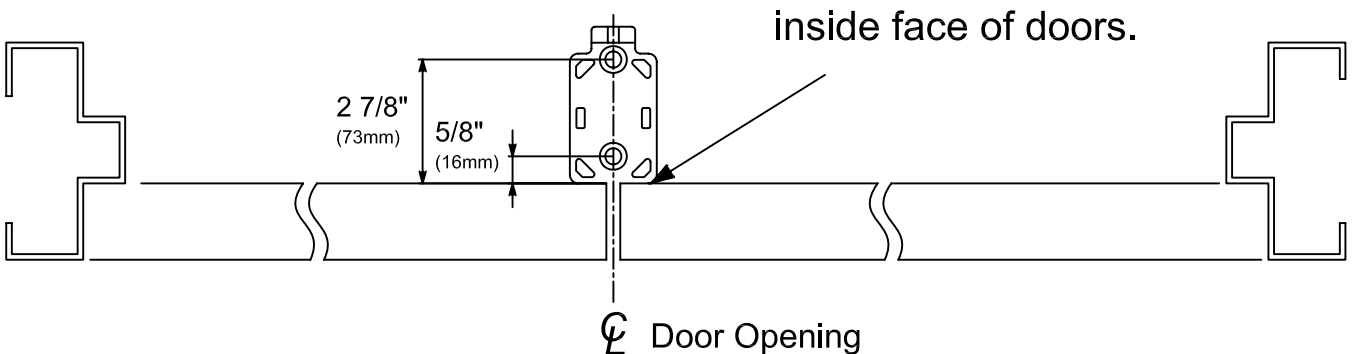
1

Drill 5/8" Diameter
x 1 1/2" Deep holes.

Cut threshold to allow
Bottom Retainer
to sit on the floor
(Use Bottom Retainer as template).

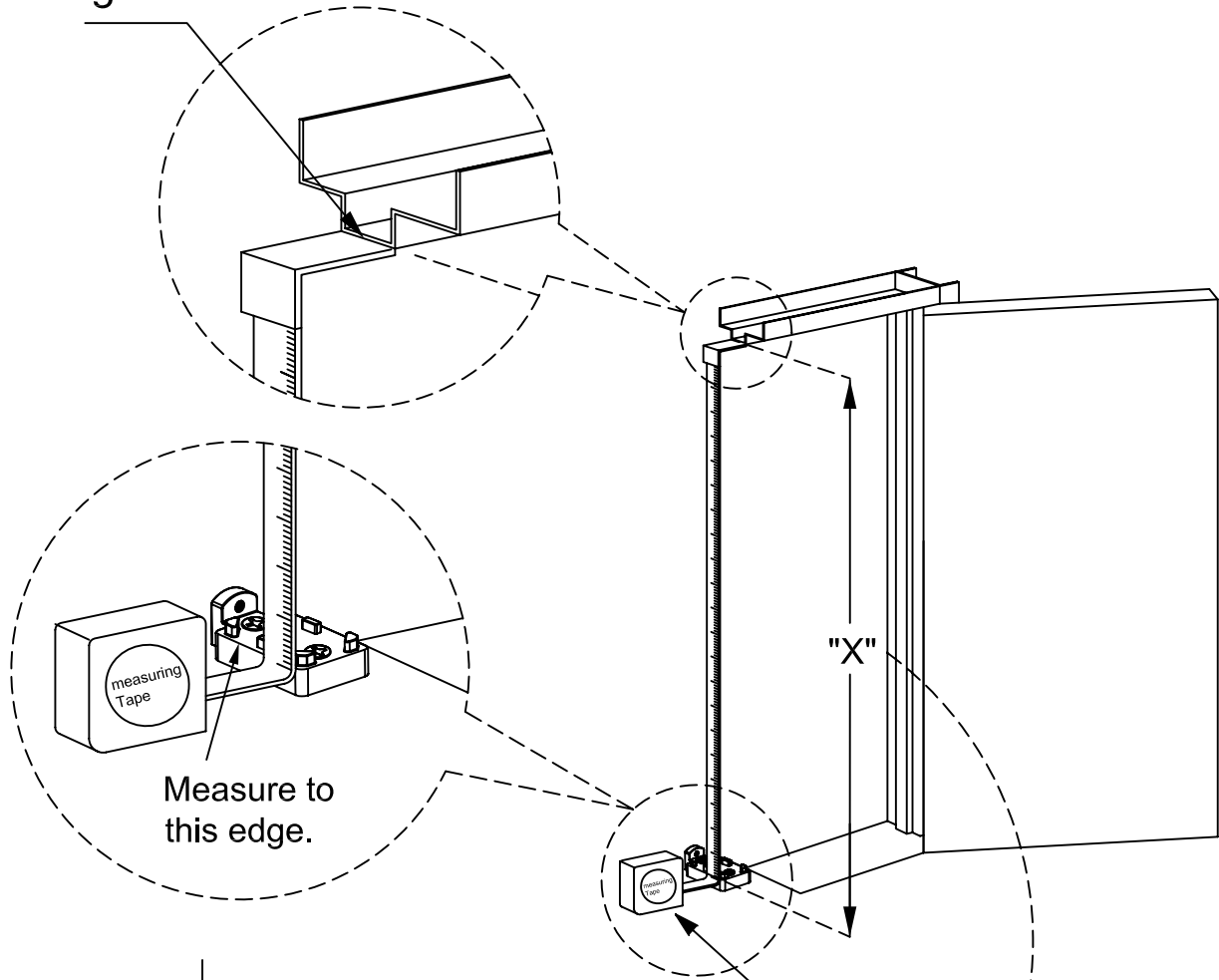
∅
Door Opening

Bottom Retainer
mounted flush against
inside face of doors.



Step 3 Size mullion

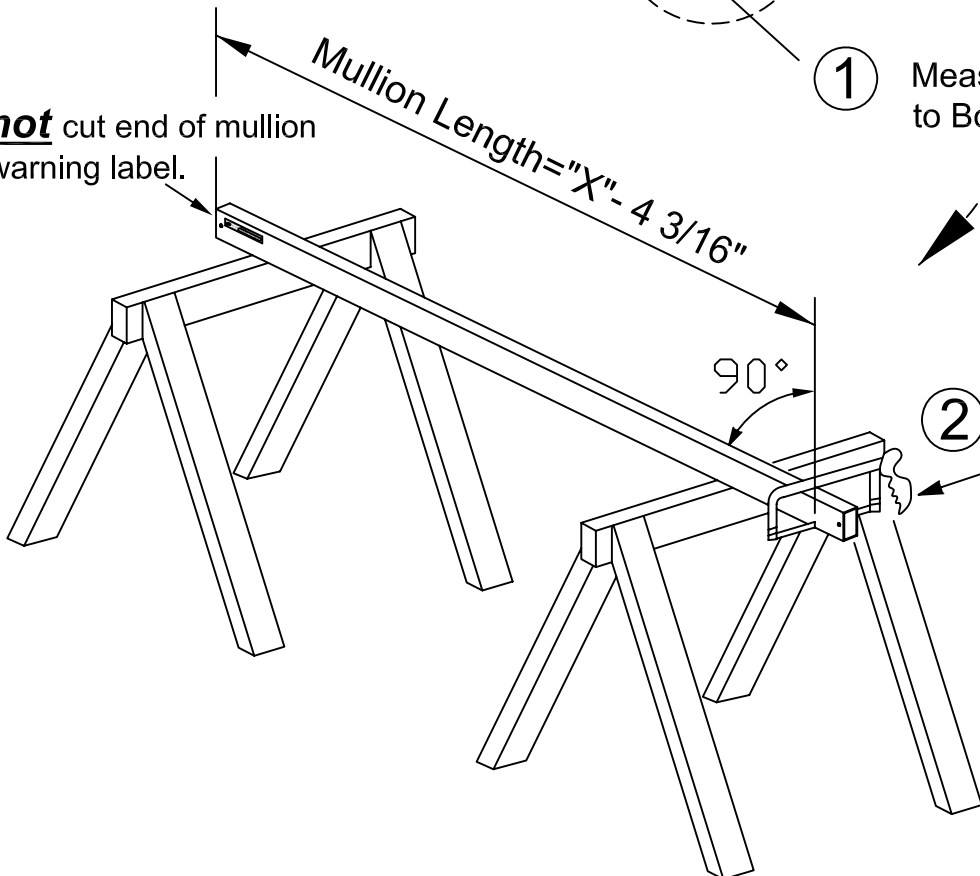
Measure from this edge.



Measure to this edge.

① Measure distance from frame to Bottom Retainer.

Do not cut end of mullion with warning label.



② Determine mullion length using formula and cut. Remove all burrs and sharp edges.

Step 4 Install Top Retainer.

Adjustment Shim – Note: If mullion is cut between 3/16" - 5/16" too short, add top mullion fitting shim.

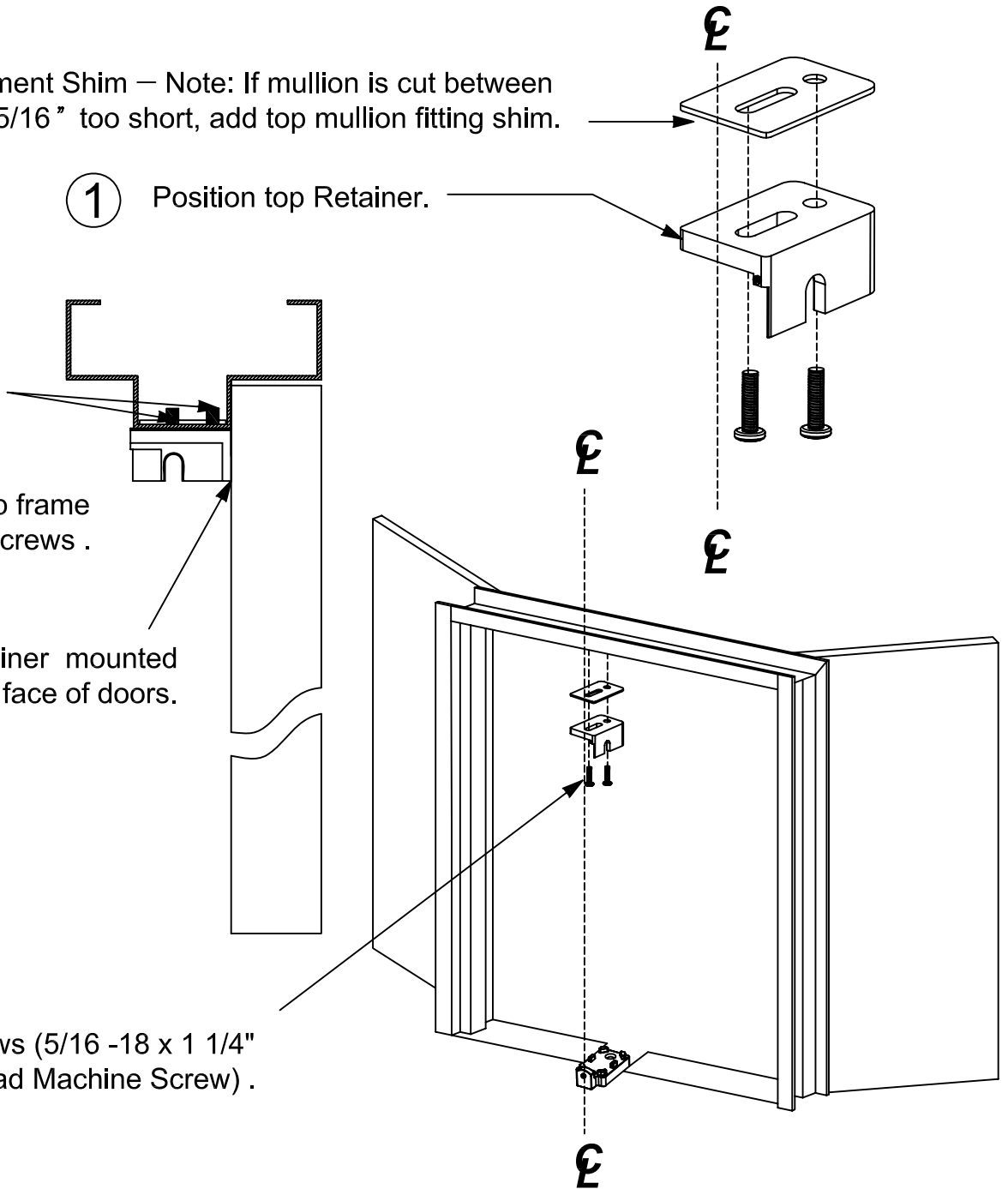
① Position top Retainer.

② Mark holes.

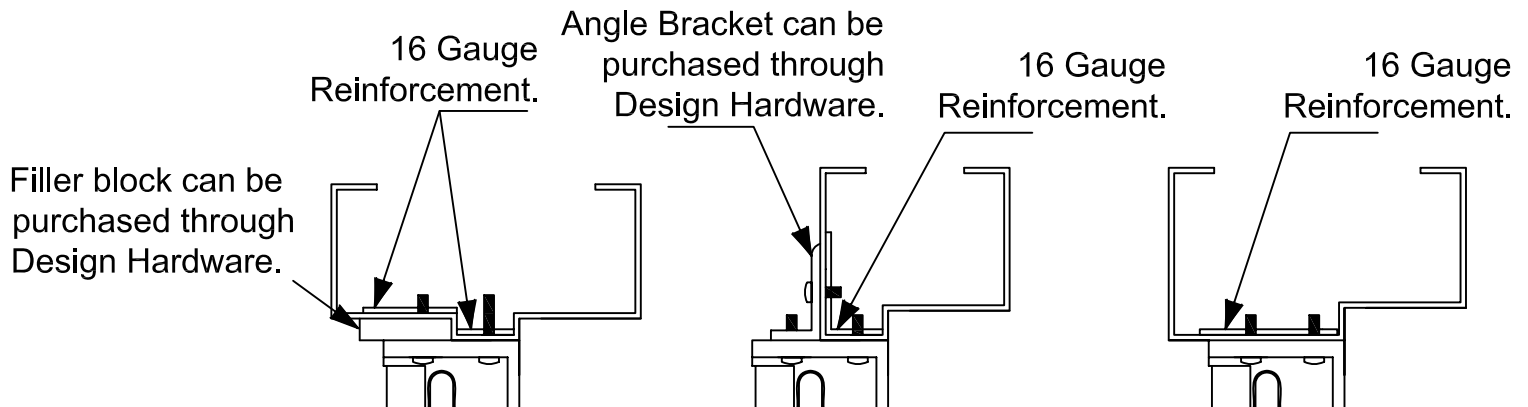
③ Drill and tap frame for 5/16 -18 screws .

Top Retainer mounted flush against inside face of doors.

④ Install screws (5/16 -18 x 1 1/4" Phillips Pan Head Machine Screw) .



Optional frame styles for mounting top retainer:



Note: 16 Gauge Reinforcements must be supplied by frame manufacturer.

Step 5 Attach headcap chassis assembly to mullion

1

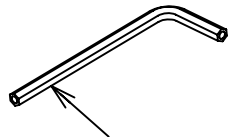
Position headcap chassis assembly onto top of mullion.

2

Using a block of wood & hammer tap headcap chassis assembly until snug against mullion.

3

Drill (2) 13/32" Diameter holes (**this side only**) using holes in unit as template.



5/32 Security Allen Wrench.

4

Drill (2) 11/32" Diameter holes .

5

Install thru bolts by tapping into hole with a hammer and a block of wood .

6

Install screws.
(1/4-20 x 1")
Flat Head Socket Security Machine Screw.

7

Tighten down screws.

Headcap chassis assembly.

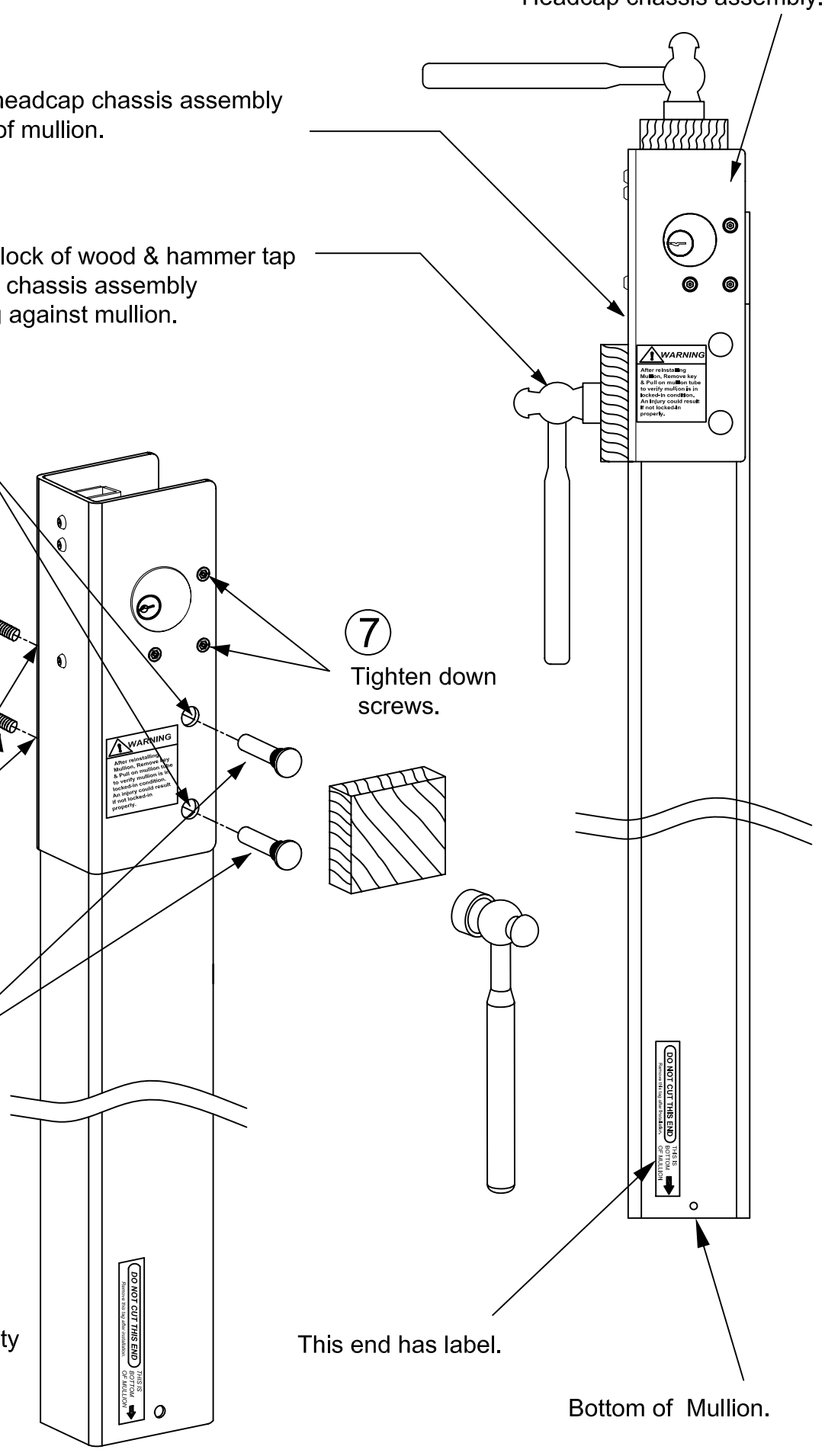
WARNING
After relocking Mullion, Release Key & Pull on mullion tube to verify mullion is in locked-in condition. An injury could result if not locked-in properly.

WARNING
After relocking Mullion, Release Key & Pull on mullion tube to verify mullion is in locked-in condition. An injury could result if not locked-in properly.

DO NOT CUT THIS END
THIS IS THE END OF THE MULLION TUBE. DO NOT CUT HERE.

This end has label.

Bottom of Mullion.



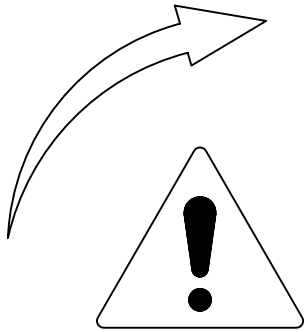
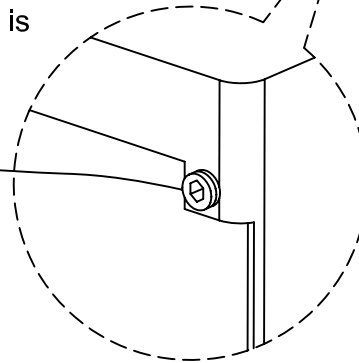
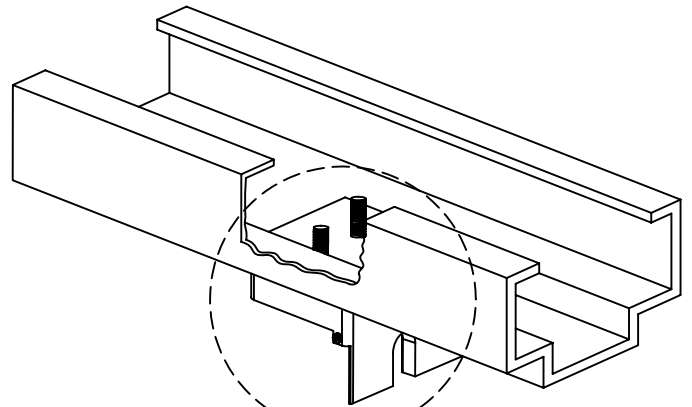
Step 6 Final installation & Adjustment

1

install screw
(8-32 x 3/8" set screw)
until flush with face of
Top Retainer.
Install mullion.

2

Check for tightness of mullion by pushing
and /or pulling on mullion.
To tighten,remove mullion (see Step 7)
and rotate set screw out 1/2 turn.
Repeat this procedure until desired tightness is
reached.

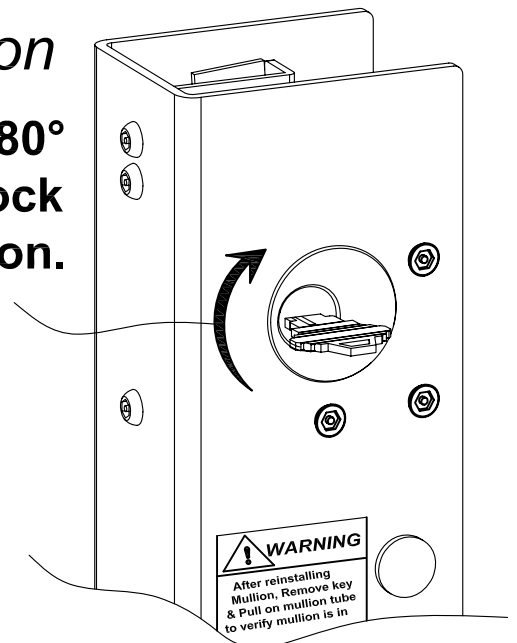
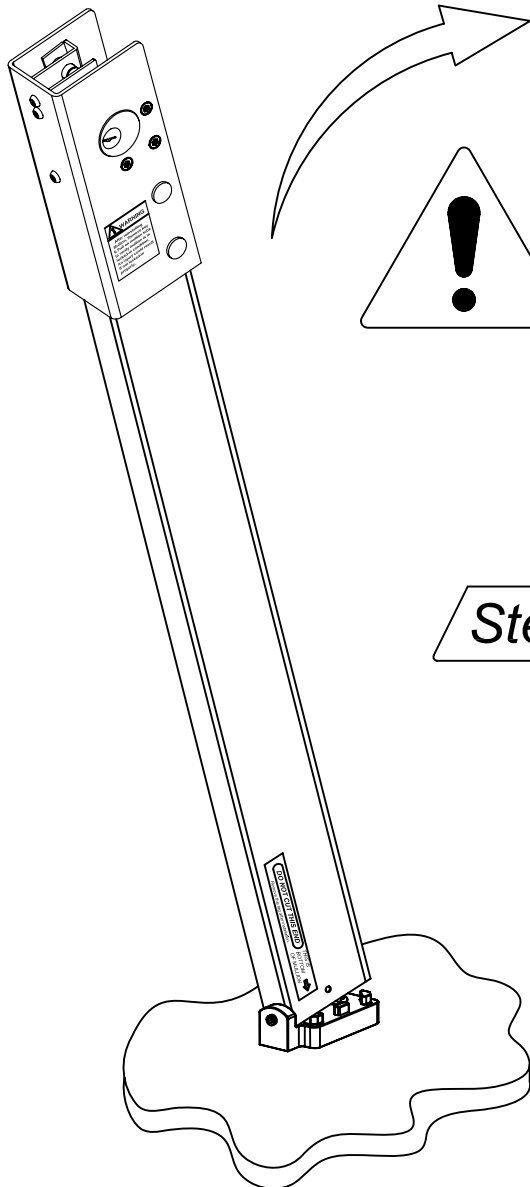


WARNING !

If set screw is adjusted out
too far, the bolt may not latch
completely allowing the mullion
to fall out when impacted.

Step 7 Operation

**Rotate key 180°
clockwise to unlock
and remove mullion.**



WARNING
After reinstalling
Mullion, Remove key
& Pull on mullion tube
to verify mullion is in