

The Sentronic® SEM 7800 Series are heavy duty, electrically controlled door holding magnets. Magnets are fail safe and hold until the current is interrupted. A manual door closer is used to control and close the door. A choice of floor, recessed wall, or surface mounted wall magnets are available.

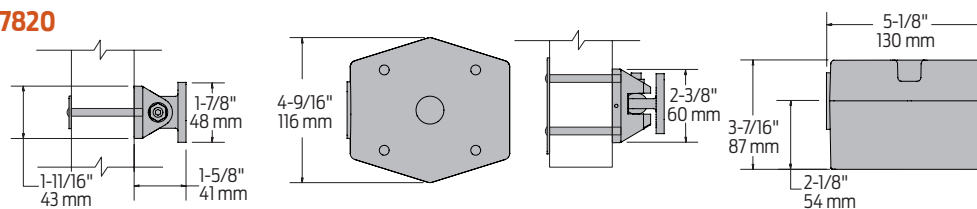
| | |
|---|---|
| Certifications | Grade 1 - ANSI A156.15, UL 10C for metal smoke barrier or labeled door, Life Safety Code, NFPA 101, 100 Hour Salt Spray, Meets BAA - Buy American Act |
| Voltage | Tri-voltage design with 35 lbs. of holding force |
| Housing | Die cast |
| Fasteners | Wood and machine screw pack |
| Finishes/Colors/ Powder Coat | Available in Aluminum and Dark Bronze only |
| Options | Now available with armature extensions (see page 11) |

SEM7800 Series

Magnets

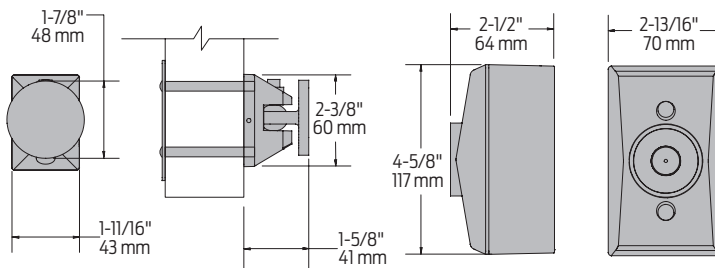
Features and mounting details

7820



| | |
|-------------------------|-----------------|
| Mounting | Floor mounted |
| Total Projection | 6-3/4" (171 mm) |

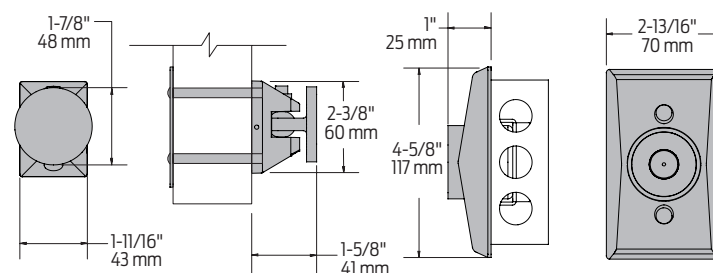
7830



| | |
|-------------------------|----------------------|
| Mounting | Surface wall mounted |
| Total Projection | 4-1/8" (105 mm) |

- Suitable for use in pocket door installations

7840



| | |
|-----------------|--|
| Mounting | <ul style="list-style-type: none"> ■ Low profile recessed wall mount ■ 2" (51 mm) x 4" (102 mm) x 1-1/2" (38 mm) |
|-----------------|--|

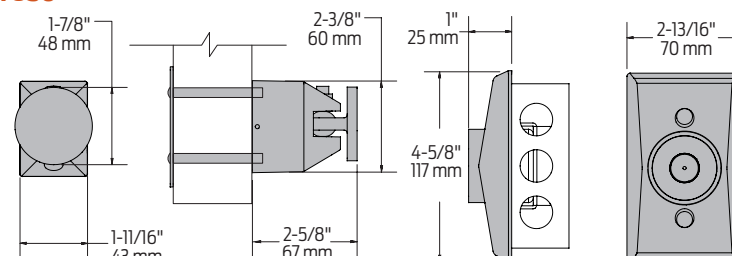
| | |
|-------------------------|----------------|
| Total Projection | 2-5/8" (67 mm) |
|-------------------------|----------------|

- Suitable for use in pocket door installations

Note:

Outlet box not included.

7850



| | |
|-----------------|---|
| Mounting | <ul style="list-style-type: none"> ■ Standard profile recessed wall mount ■ 2" (51 mm) x 4" (102 mm) x 1-1/2" (38 mm) |
|-----------------|---|

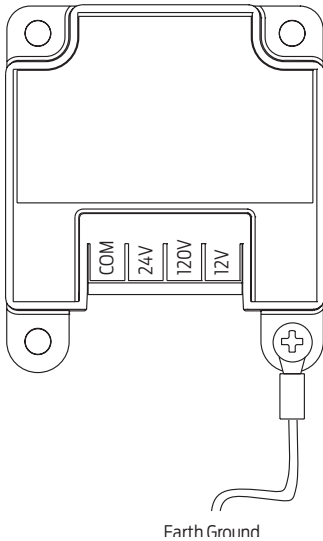
| | |
|-------------------------|----------------|
| Total Projection | 3-5/8" (92 mm) |
|-------------------------|----------------|

- Suitable for use in pocket door installations

Note:

Outlet box not included.

Voltage input



Electrical schematic

Operation:

Electromagnets are typically used with fire alarm systems. Doors are held open in the non-alarm condition. When the fire alarm panel enters the alarm condition, power to the electromagnets is removed, the doors close under door closer control, and function as a manual door. When the fire alarm panel returns to the non-alarm condition, power is reapplied to the electromagnets and the doors can be held open again.

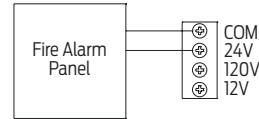


Fig. 1 24V AC/DC Wiring
Polarity is inimportant

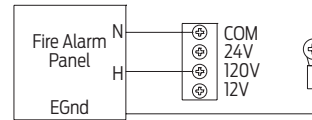


Fig. 2 120V AC Wiring

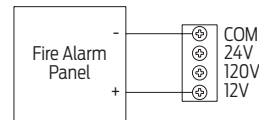


Fig. 3 12V DC Wiring
Polarity as shown

Electrical Specifications
Max. Current Draw
.030A @ 12VDC
.020A @ 24VAC/DC
.020A @ 120VAC

| | |
|-----------------------------|---|
| Holding Force | 35 lbs. @ nominal input voltage |
| Maximum Current Draw | ■ .020A @ 24VAC/DC, 120VAC ■ .030A @ 12VDC |

SEM7800 Series

Accessories

Magnets



SEM7820-516
Floor Magnet

- Magnet coil
- Standard



SEM7830-516
SEM7840-516
SEM7850-516
Wall Magnet

- Magnet coil
- Standard

Armatures



SEM7820-825
SEM7830-825
SEM7840-825
Door Armature

- Die cast low profile armature
- Standard



SEM7850-828
Door Armature

- Die cast armature
- Standard

Cover



SEM7830-72
SEM7840-72
SEM7850-72
Standard Cover

- Die cast cover
- Standard

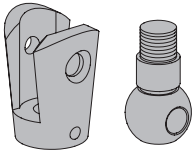
Box



SEM7830-268
Wall Box

- Die cast surface wall mount box
- Standard

Extensions



SEM7810-514 Coupler Assembly Kit

- Required for each door needing extension(s)
- Kit includes coupler link and ball pivot (alone serves as a 1-1/2" extension)



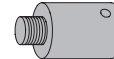
SEM7810-E050 Extension - 1/2"

- Metal
- Standard



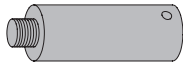
SEM7810-E075 Extension - 3/4"

- Metal
- Standard



Extension, SEM7810-E100 Extension - 1"

- Metal
- Standard



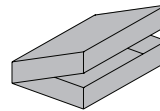
SEM7810-E200 Extension - 2"

- Metal
- Standard



Extension, SEM7810-E400 Extension - 4"

- Metal
- Standard



SEM7810-517 Extension kit

Extension kit includes:

- 10 7810SEM-E050
- 10 7810SEM-E075
- 10 7810SEM-E100
- 5 7810SEM-E200
- 20 7810SEM-514

Note: Using just the Coupler Assembly Kit (SEM7810-514) will create a 1-1/2" link.

Extension Links are available in different lengths and can be combined together to achieve the desired length. Max. recommended length = 12"

SEM7800
Series

Ordering Information

How-to-order SEM 7800 series magnets

Select magnet series

- ☐ SEM7820
- ☐ SEM7830
- ☐ SEM7840
- ☐ SEM7850

Specify finish

- ☐ Standard Powder Coat _____
Aluminum, Dark Bronze

Magnets will be shipped with:

- Die cast housing
- Cover
- Armatures
- WMS screw pack

How-to-order SEM 7810 extensions

Select magnet series

- ☐ SEM7810-514 (qty.) _____
- ☐ SEM7810-E050 (qty.) _____
- ☐ SEM7810-E075 (qty.) _____
- ☐ SEM7810-E100 (qty.) _____
- ☐ SEM7810-E200 (qty.) _____
- ☐ SEM7810-E400 (qty.) _____
- ☐ SEM7810-517 (qty.) _____